

# TECHNICAL BULLETIN

DATE: 26 JULY 2010  
PAGE 1 OF 6

\* Supersedes SL900-016, dated 14 AUG 1996. Revised to correct REPLACEMENT PARTS/SUPPLIES Table.

## SECONDARY EJECTOR OIL BREATHER FITTING MODIFICATION

### 1. PLANNING INFORMATION

#### A. Aircraft Affected:

All MD900 Helicopters.

#### B. Assembly/Components Affected By This Notice:

900F5331230-101 Secondary Ejector, LH

900F5331230-102 Secondary Ejector, RH

#### C. Reason:

MDHI has developed a modification to the engine exhaust secondary ejector oil breather fitting to eliminate engine oil seeping back into the engine compartment and aft cowlings from the engine oil breather tube. This procedure is provided to allow operators to do this modification. There have been part changes since SL900-016.

#### D. Description:

Procedures in this Bulletin provide owners and operators with instructions to modify the oil breather fitting of the secondary ejector. This technical bulletin supersedes and replaces SL900-016.

#### E. Time of Compliance:

Customer option, at owner/operator discretion. Previous compliance to SL900-016 meets the intent of this Technical Bulletin.

#### F. Classification:

Compliance with this Bulletin is a minor alteration.

#### G. FAA Approval:

The technical design aspects of this Bulletin are FAA Approved.

#### H. Manpower:

Compliance with this bulletin will be approximately 6 man-hours.

#### I. Interchangeability:

None

#### J. Disposition of Parts Removed:

N/A

#### K. Warranty Policy:

Standard warranty policy applies.

DATE: 26 JULY 2010  
 PAGE 2 OF 6

# TECHNICAL BULLETIN

**L. Tooling:**

N/A

**M. Weight and Balance:**

N/A

**N. Electrical Load Data:**

N/A

**O. Compliance Record:**

Record compliance to this Technical Bulletin in the Compliance Record section of the helicopter Log Book.

**P. Other Publications Affected:**

CSP-900RMM-2 Rotorcraft Maintenance Manual - Servicing and Maintenance  
 CSP-900IPL-4 Illustrated Parts List

**Q. Points of Contact:**

For further assistance, contact the Field Service Department at MDHI, Mesa, Arizona. Telephone 1-800-388-3378 or (480) 346-6387. DATAFAX: (480) 346-6813.

**R. Material/Part Availability:**

REPLACEMENT PARTS/SUPPLIES				
Item No	Nomenclature	Part No.	Qty.	Source
1	Tube	900F5331230-11	2	MDHI
2	Pin - Spring	MS171534	2	MDHI
3	Sealing Compound, Fireproof	MIL-S-38249, MDM16-1191 RM011316	A/R	Commercially Available Pro-Seal 700.

Contact MDHI Field Service Dept.

## 2. ACCOMPLISHMENT INSTRUCTIONS

**NOTE:** This procedure refers to maintenance tasks, standard practices and consumable materials contained in the MD900 Rotorcraft Maintenance Manual (CSP-900RMM-2).

**A. Prepare Aircraft**

- (1). Remove left and right hand exhaust ejector cowl assemblies (L270, R270) (Ref. CSP-900RMM-2, Section 53-30-00).
- (2). Disconnect left and right engine oil breather hoses at fitting on secondary ejector weldment assembly (Ref. CSP-900RMM-2, Section 79-00-00).

# TECHNICAL BULLETIN

DATE: 26 JULY 2010

PAGE 3 OF 6

- (3). Apply sealant (3) (C215). (Ref. CSP-900RMM-2, Section 20-50-00, and CSP-SPM, Section 20-30-00).
  - (a). Apply to inside diameter of existing nipple at mating surface bead location with a quantity which will contact the tube outside diameter upon installation. Remove excess sealant.
  - (b). Apply a bead of sealant around outside diameter at tube (1) to nipple edge. (Ref. Figure 1, item 3 ).

## **B. Modification Steps**

**NOTE:** Ref. Figure 1. Incorrect orientation of tube will pressurize engine gearbox.

- (1). Install tube (1). The 45 degree angle mouth must be positioned to face aft toward ejector outlet.
- (2). Install pin (2).
  - (a). Drill 0.122 to 0.128 inch (3.1 to 3.25 mm) diameter hole through wall of fitting and tube (orientation around outside diameter is optional) on tube centerline and to dimensions shown.
  - (b). Install (press fit) pin (2) until it bottoms out on tube inside diameter.

**NOTE:** If necessary open hole to the minimum diameter to install pin (2).

- (c). Grind off end of pin (2) flush to bead of fitting.

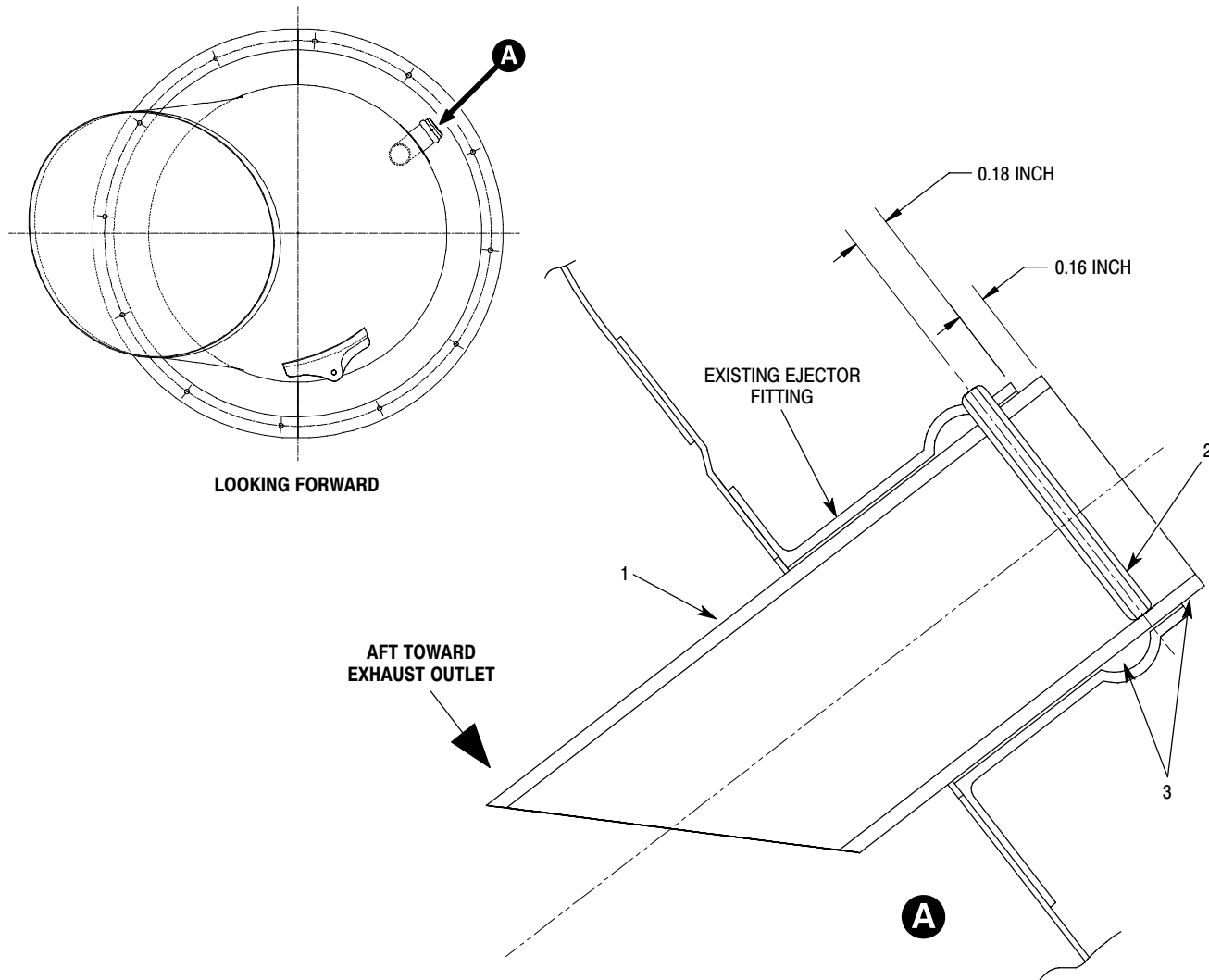
## **C. Job Close-Up**

- (1). Connect left and right engine oil breather hoses at fitting on secondary ejector weldment assembly (Ref. CSP-900RMM-2, Section 79-00-00).
- (2). Install left and right hand exhaust ejector cowl assemblies (L270, R270) (Ref. CSP-900RMM-2, Section 53-30-00).
- (3). Clean work area with best shop practices.

## **D. Compliance Record**

- (1). Record compliance to this Technical Bulletin in the Compliance Record section of the Rotorcraft Log Book.
- (2). Complete Bulletin Completed Record form (attached) and FAX or e-mail to MHDI Field Service Department.

# TECHNICAL BULLETIN



**Figure 1. Ejector Fitting Modification**



# TECHNICAL BULLETIN

DATE: 26 JULY 2010  
PAGE 5 OF 6

## Bulletin Completed Record SECONDARY EJECTOR OIL BREATHER FITTING MODIFICATION

MD Helicopters, Inc.  
Field Service Department  
4555 E. McDowell Road  
Mesa, AZ 85215-9734

800-388-3378 Phone (U.S. and Canada)  
480-346-6387 Phone (International)  
480-346-6813 Fax

FAX this form to MDHI (480) 346-6813 or E-mail to ServiceEngineering@mdhelicopters.com

Dear MDHI Employee:

This is to tell you that this Technical Bulletin has been completed as follows:

<b>Owner /Operator:</b> _____	<b>Helicopter Serial No:</b> _____
<b>Address:</b> _____ _____ _____	<b>Helicopter Total Time:</b> _____
<b>Phone:</b> _____	<b>Compliance Date:</b> _____
<b>E-mail:</b> _____	<b>Location:</b> _____

This bulletin is complete: \_\_\_\_\_  
 (Signature)

\_\_\_\_\_

(Print Name)

\_\_\_\_\_

(Title)

Comments: \_\_\_\_\_

\_\_\_\_\_

\_\_\_\_\_

