



# TECHNICAL BULLETIN

DATE: 27 JANUARY 2003  
PAGE 1 OF 3

## OIL COOLING INLET DUCT MODIFICATION

\* Supersedes Service Letter SL900-030, dated 11 April 1997.

### 1. PLANNING INFORMATION

#### **A. Aircraft Affected:**

MD900 helicopters, serial numbers 900-00008 thru 900-00089, without roof mounted air conditioning system installed.

MD900 helicopters, serial numbers 900-00077 and subsequent, with roof mounted air conditioning system installed.

#### **B. Assembly/Components Affected By This Bulletin:**

Left Side Cooling Inlet Duct (P/N 900D3658050-101, -105, 900P2250348-101), Right Side Cooling Inlet Duct (P/N 900D3658060-101, -105, 900P2250348-102).

#### **C. Reason:**

To allow operators to remove debris from in front of the heat exchanger or condenser without removing the cooling inlet ducts.

#### **D. Description:**

Procedures in this Bulletin provide owners and operators with information pertaining to adding access holes to the left and right side cooling inlet ducts.

#### **E. FAA Approval:**

The technical design aspects of this Bulletin are FAA Approved.

#### **F. Manpower:**

4.0 man-hours.

#### **G. Time of Compliance**

Customer option, at owner/operator discretion.

#### **H. Interchangeability:**

None

#### **I. Material/Part Availability:**

Contact MDHI Parts Sales Dept.

PARTS/SUPPLIES			
Nomenclature	Part No.	Qty.	Source
Hole Plug	11394KM	4	MDHI or Commercial
Sandpaper, #120		AR	Commercial

DATE: 27 JANUARY 2003  
PAGE 2 OF 3

# TECHNICAL BULLETIN

## **J. Warranty Policy:**

Standard warranty policy applies.

## **K. Tooling:**

1.0 inch (25.4 mm) wood working hole saw.

## **L. Weight and Balance:**

N/A

## **M. Electrical Load Data:**

N/A

## **N. Other Publications Affected:**

Rotorcraft Maintenance Manual (Servicing and Maintenance) (CSP-900RMM-2).

## **O. Points of Contact**

For further assistance, contact your local MDHI Field Service Representative or contact the Field Service Department at MDHI, Mesa, Arizona. Telephone 1-800-388-3378 or (480) 346-6387. DATAFAX: (480) 346-6813.

## **2. ACCOMPLISHMENT INSTRUCTIONS**

### **A. Modification**

- (1). Remove forward fairing support assemblies (Ref. CSP-900RMM-2, Section 53-30-00, Forward Fairing Support Assembly Removal).  
(Ref. Figure 1)
- (2). Support inboard wall of duct using wood at hole locations. Wood piece should be clamped firmly and be thick enough for adequate support.
- (3). Cut holes using 1.0 inch (25.4 mm) wood working hole saw.
- (4). Remove wood support and use #120 sandpaper to deburr holes. Using sandpaper, open holes as required to allow for plugs to fit.
- (5). Remove all debris and install plugs in holes.
- (6). Install forward fairing support assemblies (Ref. CSP-900RMM-2, Section 53-30-00, Forward Fairing Support Assembly Installation).

## **3. IDENTIFICATION**

N/A

## **4. DISPOSITION OF PARTS REMOVED**

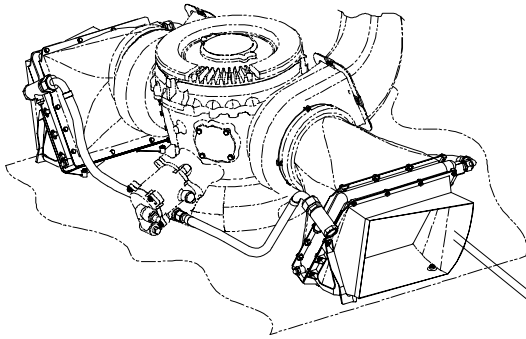
N/A

## **5. COMPLIANCE RECORD**

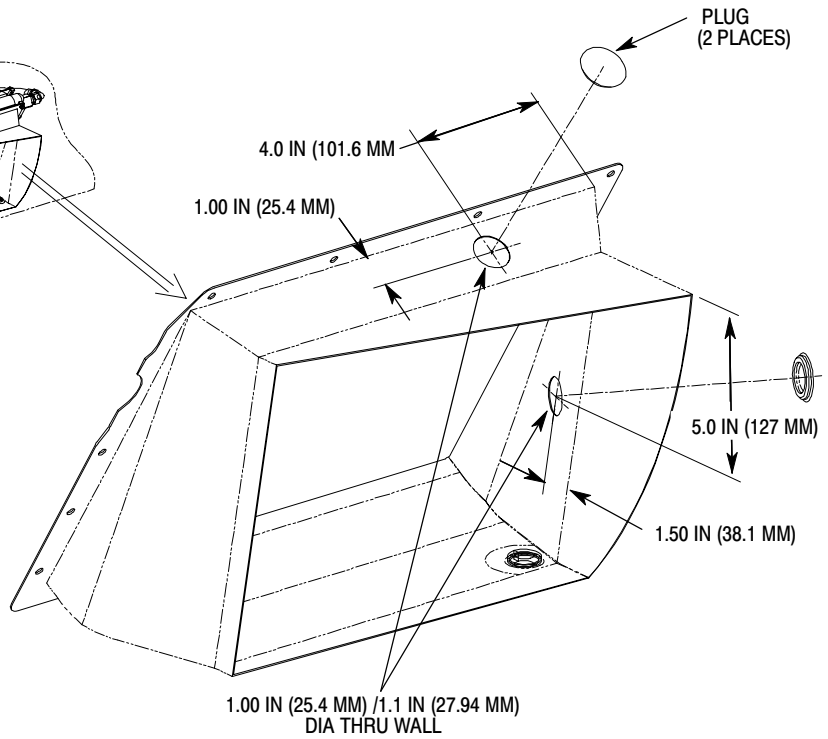
Record compliance to this Technical Bulletin in the Compliance Record section of the helicopter Log Book.

# TECHNICAL BULLETIN

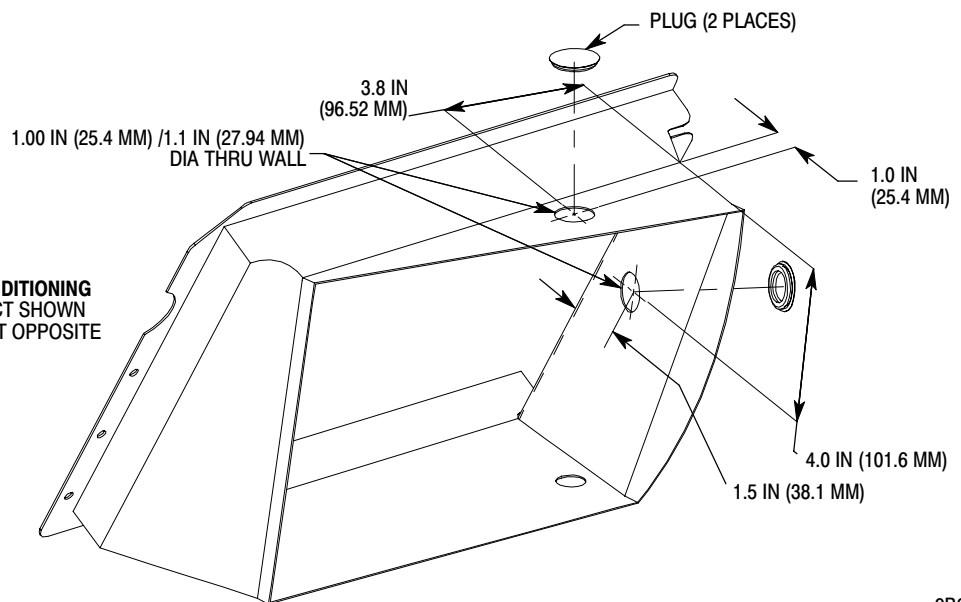
DATE: 27 JANUARY 2003  
PAGE 3 OF 3



**WITHOUT ROOF MOUNTED AIR CONDITIONING**  
900D3658050-101, -105 LH INLET DUCT SHOWN  
900D3658060-101, -105 RH INLET DUCT OPPOSITE



**WITH ROOF MOUNTED AIR CONDITIONING**  
900P2250348-101 LH INLET DUCT SHOWN  
900P2250348-102 RH INLET DUCT OPPOSITE



9B63-187

**Figure 1. Oil Cooling Duct Access Holes**