



# TECHNICAL BULLETIN

DATE: 30 AUGUST 2000  
PAGE 1 OF 3

## RANGE EXTENDER MODIFICATION

### 1. PLANNING INFORMATION

**A. Aircraft Affected:**

MD-900 helicopters, serial number 900-00010 thru 900-00082.

**B. Assembly/Components Affected By This Notice:**

Range Extender P/N 900P3661206-103.

**C. Reason:**

The notch on the 900P3661206-103 range extender, used to secure the flapper valve chain, frequently breaks the chain and the position of the notch places the chain across the neck opening, blocking it during fueling.

**D. Description:**

Procedures in this Bulletin provide owners and operators with information pertaining to modifying the range extender by blending the existing notch and adding a new notch on the top inner flange.

**E. FAA Approval:**

The design engineering aspects of this Technical Bulletin are FAA Approved.

**F. Manpower:**

One (1) man-hour.

**G. Time of Compliance:**

Optional, at the discretion of the owner/operator.

**H. Interchangeability:**

None

**I. Material/Part Availability:**

Contact MDHI Part Sales Dept.

| REPLACEMENT PARTS/SUPPLIES            |                         |      |  |
|---------------------------------------|-------------------------|------|--|
| Nomenclature                          | Part No.                | Qty. | Source   |
| Chemical Coating, MIL-C-5541, Class 2 | Iridite 14-2<br>Al-Coat | AR   | Richardson Company<br>Allied-Kelite Products<br>Division<br>2400 E. Devon Avenue<br>Des Plains, IL |

**J. Warranty Policy:**

N/A

DATE: 30 AUGUST 2000  
PAGE 2 OF 3

# TECHNICAL BULLETIN

## **K. Tooling:**

N/A

## **L. Weight and Balance**

N/A

## **M. Electrical Load Data:**

N/A

## **N. Other Publications Affected:**

Rotorcraft Maintenance Manual (CSP-900RMM-2) and Illustrated Parts List (CSP-900IPL-4).

## **2. ACCOMPLISHMENT INSTRUCTIONS**

### **A. Preparation Instructions**

- (1). Remove range extender (Ref. CSP-900RMM-2, Section 28-00-00, Range Extender Removal).

### **B. Modification Instructions**

(Ref. Figure 1)

- (1). Blend existing notch with 0.13 inch (3.302 mm) radius normal to notch face, as shown.
- (2). Add new notch to dimensions shown.
- (3). Apply chemical coating to reworked areas per manufacturer's instructions.
- (4). Ink stamp new part number, 900P3661206-105, on modified range extender.

### **C. Completion Instructions**

- (1). Install modified range extender (Ref. CSP-900RMM-2, Section 28-00-00, Range Extender Installation).

## **3. DISPOSITION OF PARTS REMOVED**

N/A

## **4. COMPLIANCE RECORD**

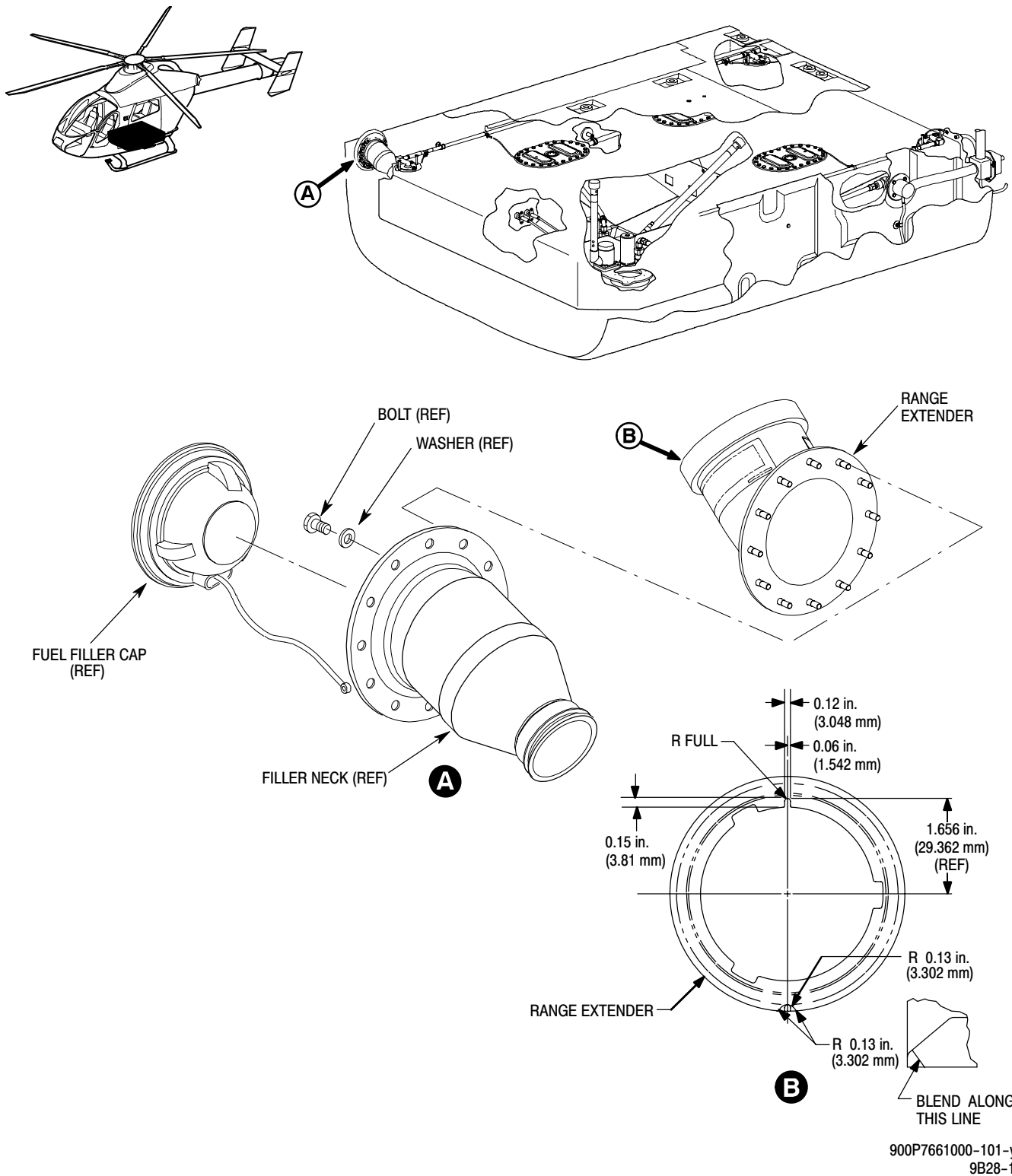
Record compliance to this Technical Bulletin in the Compliance Record section of the helicopter Log Book.

## **5. POINTS OF CONTACT:**

For further assistance, contact your local MDHI Field Service Representative (refer to the latest revision of the "At Your Service" handbook for address and telephone numbers) or contact the Field Service Department at MDHI, Mesa, Arizona. Telephone 1-800-388-3378 or (480) 346-6387. DATAFAX: (480) 346-6813.

# TECHNICAL BULLETIN

DATE: 30 AUGUST 2000  
PAGE 3 OF 3



900P7661000-101-yad  
9B28-159

**Figure 1. Range Extender Modification**