



SERVICE BULLETIN

DATE: 20 DECEMBER 2007

PAGE 1 OF 6

/// MANDATORY ////////////////////////////////////// MANDATORY ////////////////////////////////////// MANDATORY ///

FORWARD DIRECTIONAL CONTROL CABLE INSTALLATION AND ROTATING CONE CONTROL ROD, ONE TIME INSPECTION

1. PLANNING INFORMATION

A. Aircraft Affected:

All MD900 helicopters, serial number 900-00008 thru 900-00123.

B. Assembly/Components Affected By This Notice:

900C3010045-105 forward directional control cable, 900C2010240-103 cable attach bracket, and 900C2010582-103 rotating cone control rod.

C. Reason:

The inspection instructions in this bulletin will help find possible problems with the directional control mechanism. These directional control problems could make it necessary to do an emergency landing of the helicopter.

D. Description:

Procedures in this bulletin give owners and operators information about a one time inspection of the forward directional control cable installation and rotating cone control rod.

E. Time of Compliance:

The instructions in this bulletin must be completed within the next 10 flight hours after you receive this bulletin and no later than 31 January 2008.

F. Manpower:

3.5 man-hours.

G. Interchangeability:

None

H. Points of Contact:

For further assistance, contact the Field Service Department at MDHI, Mesa, Arizona. Telephone 1-800-388-3378 or (480) 346-6387. DATAFAX: (480) 346-6813.

I. Material/Part Availability:

N/A.

J. Warranty Policy:

N/A

K. Disposition of Parts Removed:

N/A

L. Tooling:

N/A

*Copyright © 1999 - 2007 by MD Helicopters, Inc.
This document may be reproduced and distributed provided no fee is charged,
the text is not modified, and this copyright notice is included.*

/// MANDATORY ////////////////////////////////////// MANDATORY ////////////////////////////////////// MANDATORY ///



SERVICE BULLETIN

DATE: 20 DECEMBER 2007

PAGE 3 OF 6

/// MANDATORY ////////////////////////////////////// MANDATORY ////////////////////////////////////// MANDATORY ///

- (b). Connect rotating cone control rod to aft end of forward directional control cable (Ref. CSP-900RMM-2, Section 67-20-00).
 - (c). Install thruster assembly (Ref. CSP-900RMM-2, Section 67-20-00).
 - (d). Install rotating cone (Ref. CSP-900RMM-2, Section 67-20-00).
 - (e). Make sure the directional control system moves freely and smoothly. Move directional control pedals from full left to full right and full left again.
- (14). Make a record in the Compliance Record section of the Rotorcraft Log Book that this service bulletin has been completed.
- (15). Complete Bulletin Completed Record form (attached) and FAX to MDHI Field Service Department.

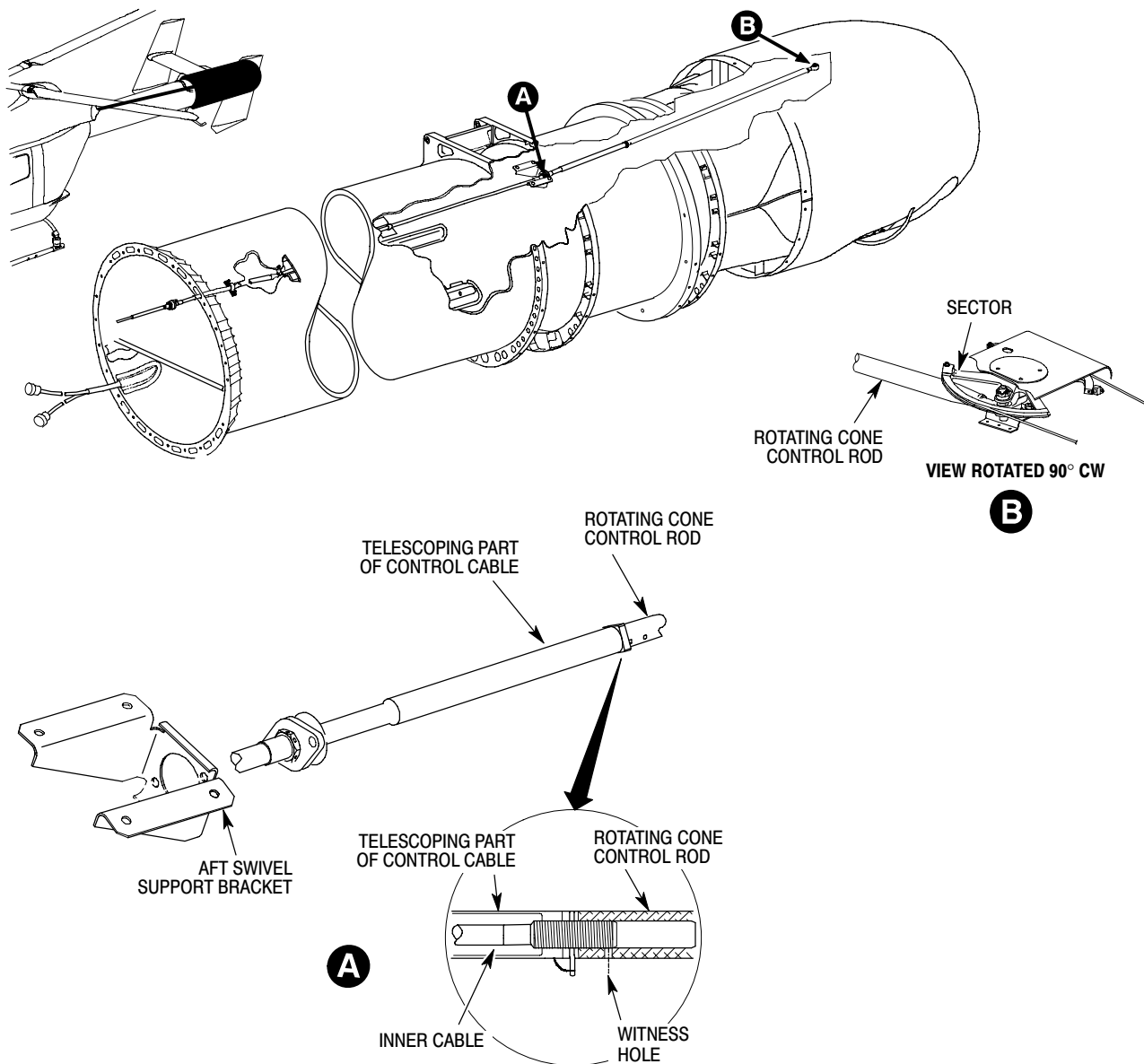
/// MANDATORY ////////////////////////////////////// MANDATORY ////////////////////////////////////// MANDATORY ///

DATE: 20 DECEMBER 2007

PAGE 4 OF 6

SERVICE BULLETIN

MANDATORY MANDATORY MANDATORY



90001300205-103-E-D
9B67-198

Figure 1. Forward Directional Control Cable Installation and Rotating Cone Control Rod

*Copyright © 1999 - 2007 by MD Helicopters, Inc.
This document may be reproduced and distributed provided no fee is charged,
the text is not modified, and this copyright notice is included.*

MANDATORY MANDATORY MANDATORY



SERVICE BULLETIN

DATE: 20 DECEMBER 2007

PAGE 5 OF 6

/// MANDATORY ////////////////////////////////////// MANDATORY ////////////////////////////////////// MANDATORY ///

Bulletin Completed Record

Service Bulletin SB900-106, Forward Directional Control Cable Installation and Rotating Cone Control Rod, One Time Inspection

FAX this form to MDHI (480) 346-6813 or
E-mail to ServiceEngineering@mdhelicopters.com

MD Helicopters, Inc.
Field Service Department
4555 E. McDowell Road
Mesa, AZ 85215-9734

800-388-3378 phone (U.S. and Canada)
480-346-6387 phone (International)
480-346-6813 Fax

Dear Sir:

This is to tell you that this service bulletin has been completed as shown below:

Owner/Operator: _____

Aircraft Serial No: _____

Address: _____

Phone: _____

E-mail address: _____

Helicopter Total Time: _____

Date: _____

Location: _____

This bulletin is complete: _____

(Signature)

(Print Name)

(Title)

/// MANDATORY ////////////////////////////////////// MANDATORY ////////////////////////////////////// MANDATORY ///



DATE: 20 DECEMBER 2007
PAGE 6 OF 6

SERVICE BULLETIN

/// MANDATORY ////////////////////////////////////// MANDATORY ////////////////////////////////////// MANDATORY ///

This page intentionally left blank!

/// MANDATORY ////////////////////////////////////// MANDATORY ////////////////////////////////////// MANDATORY ///