



SERVICE BULLETIN

DATE: 05 APRIL 2006

PAGE 1 OF 8

/// MANDATORY ////////////////////////////////////// MANDATORY ////////////////////////////////////// MANDATORY ///

DIRECTIONAL PEDAL ASSEMBLY MODIFICATION

1. PLANNING INFORMATION:

A. Aircraft Affected:

All MD900 helicopters, serial number 900-00008 thru 900-00111, 900-00113 and 900-00114.

Serial numbers 900-00112 and 900-00115 and subsequent will have the intent of this bulletin accomplished prior to delivery.

B. Assembly/Components Affected By This Notice:

Pedal Assembly, Directional - Pilot Dual Controls (P/N 900C1012007-107, 109, -111, -113, 900C6012007-111)

Pedal Assembly, Directional - Co-Pilot Dual Controls (P/N 900C1012207-105, -107, 109, -111, -113)

Pedal Assembly, Directional - Pilot, Single Control (P/N 900C1010007-107, -109, -111, -113, 900C6010007-111)

C. Reason:

MD Helicopters, Inc. (MDHI) has received a report of a directional pedal separating from the pedal shaft assembly in the area of the welds at the pedal support plate and the upper and lower pedal supports.

Failure to comply with the requirements of this Bulletin could result in loss of directional control.

D. Description:

Procedures in this Bulletin provide owners and operators with information pertaining to modifying the Directional Pedal Assemblies by removing the existing pedals, removing the welded pedal support plate from the pedal shafts, installing a new pedal mount on the pedal shafts with rivets and reinstalling the pedals on the new pedal mounts.

E. FAA Approval:

The technical design aspects of this Bulletin are FAA Approved.

F. Manpower:

8.0 man-hours are required to complete this Bulletin on aircraft equipped with single controls.

16.0 man-hours are required to complete this Bulletin on aircraft equipped with dual controls.

G. Time of Compliance:

The requirements of this Bulletin shall be accomplished no later than 30 days after receipt of parts and tools, but, no later than 03 October 2006.

H. Interchangeability:

None

*Copyright 1999-2006 by MD Helicopters Inc.
This document may be reproduced and distributed provided no fee is charged,
the text is not modified, and this copyright notice is included.*

/// MANDATORY ////////////////////////////////////// MANDATORY ////////////////////////////////////// MANDATORY ///



DATE: 05 APRIL 2006
 PAGE 2 OF 8

SERVICE BULLETIN

MANDATORY

I. Material/Part Availability:

Contact the MDHI Warranty Repair Department to order the Directional Pedal Modification Kit.

REPLACEMENT PARTS/SUPPLIES			
Nomenclature	Part No.	Qty.	Source
Directional Pedal Modification Kit	SBK-010	*	MDHI
Pedal Mount – Left	900C2010073-101	1	(Included in Kit)
Pedal Mount – Right	900C2010073-102	1	(Included in Kit)
Rivet, Blind	NAS1919B08S03	12	(Included in Kit)
Sealant	MIL-S-8802, B1/2	1 oz.	Commercial * *
Primer	MIL-P-85582	AR	Commercial * *
Chemical Coating (Alodine)	MIL-C-5541	AR	Commercial * *

*One Kit is required for aircraft with single controls, two Kits are required for aircraft with dual controls.

* * Refer to CSP-SPM, Chapter 91-00-00 for manufacturer / supplier.

J. Warranty Policy:

The MDHI Warranty and Repair Dept. will provide Directional Pedal Modification Kits at no cost to the operator. MDHI will also provide, to authorized Service Centers, up to eight (8) hours of labor warranty (spares credit) for rework of each set of directional pedals.

K. Tooling:

Rivet Gun - Huck 2012 with Nose Assembly 99-2743 (tools available from MDHI).

High-Speed Grinder.

Reamer 0.256-0.261 (6.5024-6.6294 mm).

L. Weight and Balance:

N/A

M. Electrical Load Data:

N/A

N. Other Publications Affected:

Rotorcraft Maintenance Manual (CSP-900RMM-2).

Standard Practice Manual (CSP-SPM).

O. Points of Contact:

For further assistance, contact the Field Service Department at MDHI, Mesa, Arizona. Telephone 1-800-388-3378 or (480) 346-6387. DATAFAX: (480) 346-6813.

*Copyright 1999-2006 by MD Helicopters Inc.
 This document may be reproduced and distributed provided no fee is charged,
 the text is not modified, and this copyright notice is included.*

MANDATORY

SERVICE BULLETIN

DATE: 05 APRIL 2006

PAGE 3 OF 8

MANDATORY **MANDATORY** **MANDATORY**

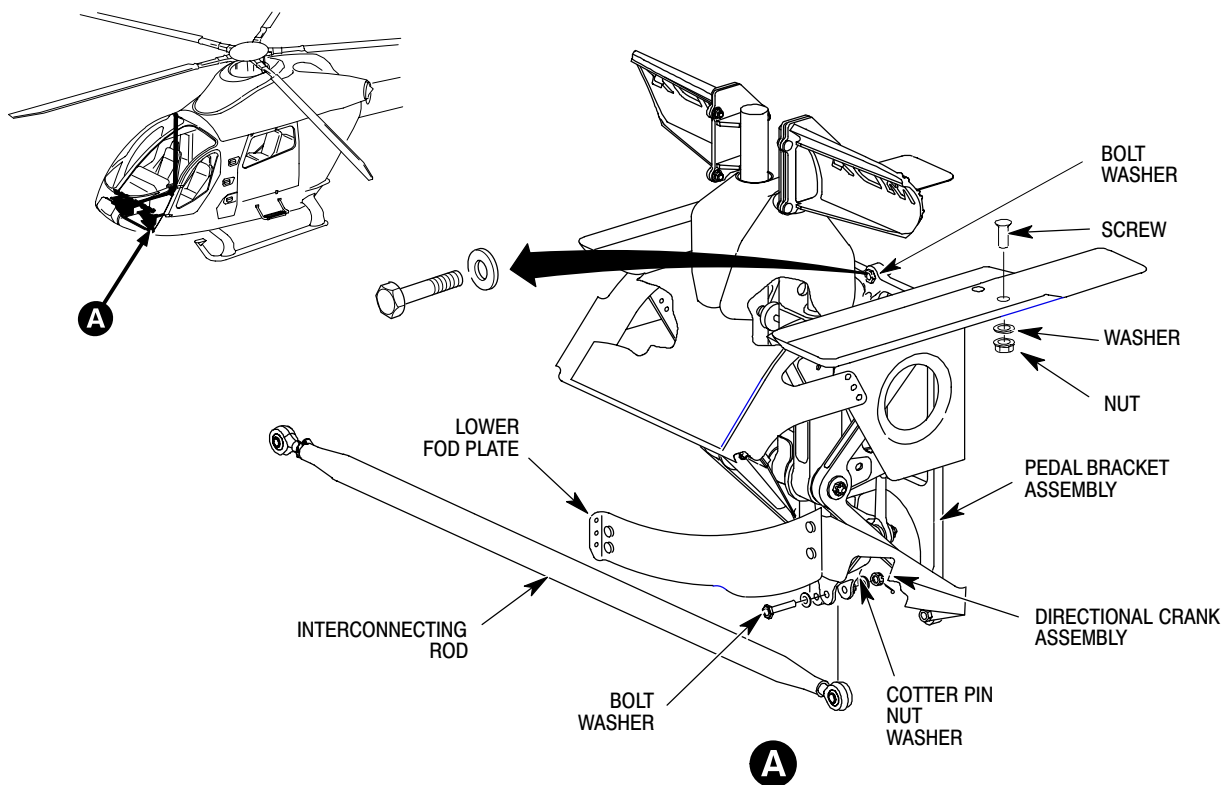
2. ACCOMPLISHMENT INSTRUCTIONS:

A. Modify Directional Pedal Assembly

- (1). Remove chin windscreens (Ref. CSP-900RMM-2, Section 53-10-00, Windscreen Removal).

NOTE: Application of heat, 180°F (82°C) maximum, will aid in removal of sealant.

- (2). Remove pedals (Ref. CSP-900RMM-2, Section 67-20-00, Directional Control Pedals Removal).
- (3). With 206E/207E Engines: Remove pedal potentiometer (Ref. CSP-900RMM-2, Section 67-20-00, Potentiometer Removal).
- (4). Remove and retain directional control pedals and attaching hardware (Ref. Figure 1).
 - (a). Remove cotter pin, nut, bolt and washers securing interconnecting rod to lower directional crank assembly.
 - (b). Remove hardware securing pedal bracket assembly and lower FOD plate.
 - (c). Remove sealant from around pedal bracket assembly.
 - (d). Remove complete pedal assembly and lower FOD plate from aircraft.



9G53-030

Figure 1. Pedal Assembly Removal / Installation

Copyright 1999-2006 by MD Helicopters Inc.

This document may be reproduced and distributed provided no fee is charged, the text is not modified, and this copyright notice is included.

MANDATORY **MANDATORY** **MANDATORY**

DATE: 05 APRIL 2006
PAGE 4 OF 8

SERVICE BULLETIN

MANDATORY

- (5). Modify each pedal shaft assembly (Ref. Figure 2).
 - (a). Remove support plate by cutting through upper and lower supports.
 - (b). Cut off welded cap, top 0.125 in. (3.18 mm) of pedal shaft.



When grinding off remainder of upper and lower support, do not grind into base metal of pedal shaft.

- (c). Grind off remainder upper and lower supports to allow new pedal mount to slip on pedal shaft. A slight interference fit is allowable.
 - (d). Vacuum shavings from pedal assembly.
- (6). Install pedal mounts (Ref. Figure 2).
 - (a). Ensure both pedal adjusters are in the same adjustment holes.
 - (b). Insert rig pin through mount bracket and pedal shafts.
 - (c). Securely clamp pedal shafts to align evenly with each other.
 - (d). Temporarily install left pedal mount (P/N 900C2010073-101) on left pedal shaft assembly and right pedal mount (P/N 900C2010073-102) on right pedal shaft assembly.
 - (e). Align pedal mounts evenly and secure both pedal mounts with clamping device.

NOTE:

- Observe pedal mounts to determine that they are aligned parallel and in proper plane to each other.
 - When drilling pedal shafts, ensure drill bit only goes through one wall of pedal shaft.
 - (f). Match drill forward and aft rivet holes in mount through one wall of each pedal shaft and cleco in place.
 - (g). Remove clamping devices from pedal shafts and pedal mounts.
 - (h). Move pedal shafts to allow for access to inboard sides of pedal mounts.
 - (i). Match drill one inboard rivet hole in mount through one wall of each pedal shaft.
 - (j). Ream holes to 0.256-0.261 in. (6.5024-6.6294 mm).
 - (k). Remove pedal mounts, deburr and clean debris from inside pedal tubes and pedal assembly.
 - (l). Treat bare metal with alodine.
 - (m). Install pedal mounts on pedal shaft and secure each mount with five rivets wet with primer.
 - (n). Apply a fillet of sealant (C216: Ref. CSP-SPM, Section 91-00-00), per manufacturer's instructions, around pedal mount where it mates with pedal shaft assembly.
- (7). Prepare mating surfaces of retained directional control pedals and pedal mounts for class "L" electrical bond (Ref. CSP-SPM).

Copyright 1999-2006 by MD Helicopters Inc.

This document may be reproduced and distributed provided no fee is charged, the text is not modified, and this copyright notice is included.

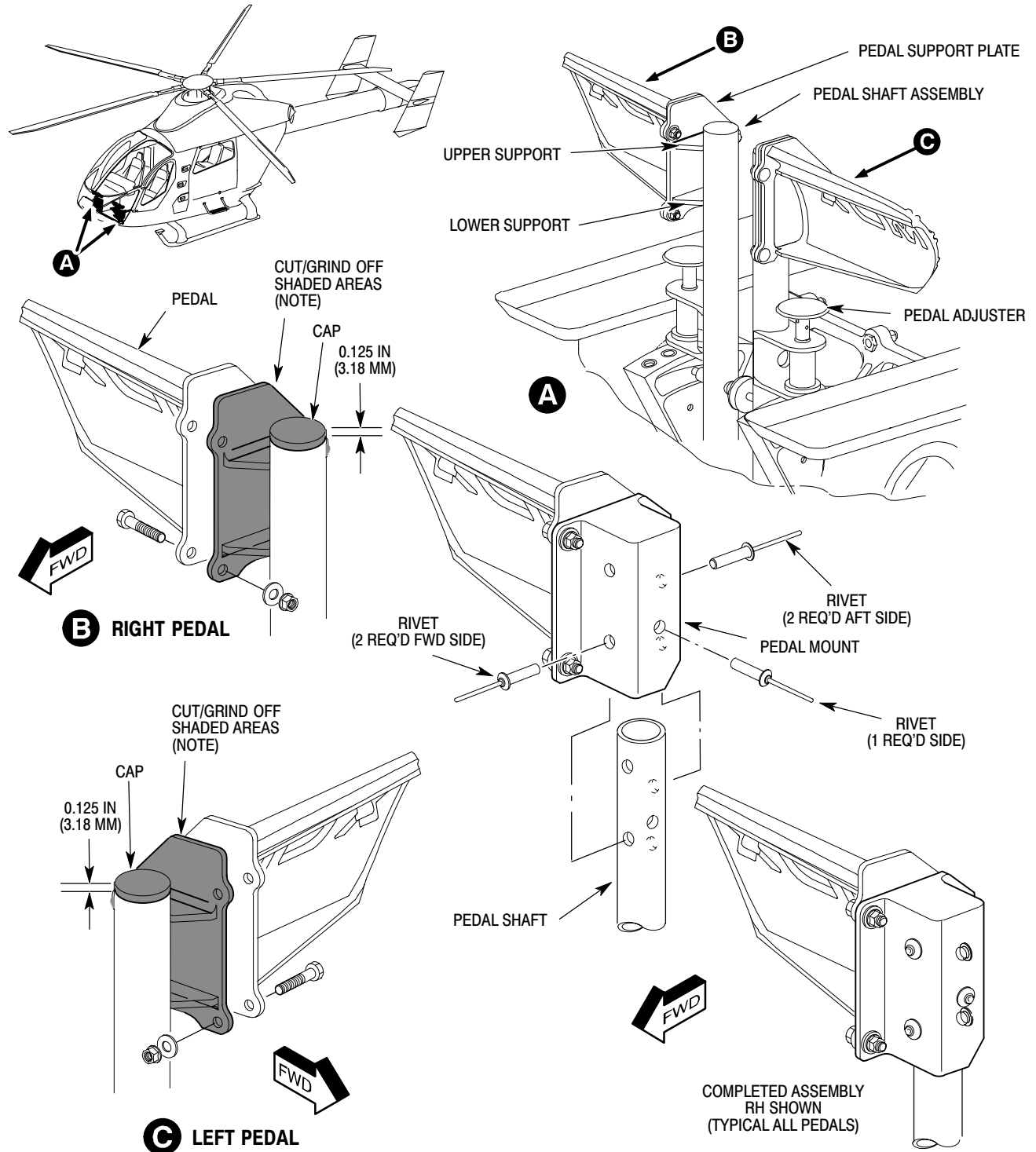
MANDATORY

SERVICE BULLETIN

DATE: 05 APRIL 2006

PAGE 5 OF 8

MANDATORY MANDATORY MANDATORY



NOTE: DO NOT GRIND INTO BASE METAL OF PEDAL SHAFT.

9B67-197

Figure 2. Directional Pedals Modification

Copyright 1999-2006 by MD Helicopters Inc.

This document may be reproduced and distributed provided no fee is charged, the text is not modified, and this copyright notice is included.

MANDATORY MANDATORY MANDATORY

DATE: 05 APRIL 2006

PAGE 6 OF 8

SERVICE BULLETIN

/// MANDATORY ///

- (8). Install retained directional control pedals on pedal mounts with retained attaching hardware (Ref. CSP-900RMM-2, Section 67-20-00, Directional Control Pedals Installation).
- (9). Test directional control pedals for class "L" electrical bond (Ref. CSP-SPM).
- (10). Apply an environmental seal of sealant (C216: Ref. CSP-SPM, Section 91-00-00), per manufacturer's instructions, around pedals and pedal mount.
- (11). Touch up paint as required.
- (12). Reinstall directional control pedals and attaching hardware (Ref. Figure 1).
 - (a). Prepare mating surfaces of directional control pedal mount and mounting bulkhead for class "L" electrical bond (Ref. CSP-SPM).
 - (b). Position complete pedal assembly and lower FOD plate in aircraft.
 - (c). Install hardware securing pedal bracket assembly and lower FOD plate.
 - (d). Install bolt, washers, nut and cotter pin, securing interconnecting rod to lower directional crank assembly.
 - (e). Test directional control pedal mount for class "L" electrical bond (Ref. CSP-SPM).
 - (f). Apply a fillet of sealant (C216: Ref. CSP-SPM, Section 91-00-00), per manufacturer's instructions, around directional control pedal mount where it mates with mounting bulkhead.
- (13). With 206E/207E Engines: Install pedal potentiometer (Ref. CSP-900RMM-2, Section 67-20-00, Potentiometer Installation).
- (14). With 206E/207E Engines: Verify pedal potentiometer rigging (Ref. CSP-900RMM-2, Section 67-20-00, Pedal Anticipator (Transducer) Rigging (902 CONFIG)).
- (15). Install chin windscreens (Ref. CSP-900RMM-2, Section 53-10-00, Windscreen Installation).
- (16). Touch up paint as required.

3. IDENTIFICATION:

Using permanent ink, ink stamp "90005340111-101" on each pedal shaft of modified directional pedal assembly.

4. DISPOSITION OF PARTS REMOVED:

N/A

5. COMPLIANCE RECORD:

Record compliance to this Service Bulletin in the Compliance Record section of the helicopter Log Book.

/// MANDATORY ///



SERVICE BULLETIN

DATE: 05 APRIL 2006

PAGE 7 OF 8

/// MANDATORY ////////////////////////////////////// MANDATORY ////////////////////////////////////// MANDATORY ///

Bulletin Compliance Recording Form

Service Bulletin SB900-100, Directional Pedal Assembly Modification

FAX this form to MDHI (480) 346-6813 or
Email to ServiceEngineering@mdhelicopters.com

MD Helicopters, Inc.
Field Service Department
4555 E. McDowell Road
Mesa, AZ 85215-9734

800-388-3378 phone (U.S. and Canada)
480-346-6387 phone (International)
480-346-6813 Fax

Dear Sir:

This is to inform you that the Service Bulletin has been complied with as indicated below:

Customer/Operator Name: _____

Aircraft Serial No. _____

Address: _____

Address: _____

Phone: _____

Completed

Helicopter Total Time: _____ Date: _____

Location: _____

Signature of Person Confirming Compliance _____

/// MANDATORY ////////////////////////////////////// MANDATORY ////////////////////////////////////// MANDATORY ///



DATE: 05 APRIL 2006
PAGE 8 OF 8

SERVICE BULLETIN

/// MANDATORY ///

This page intentionally left blank!

/// MANDATORY ///