



# SERVICE BULLETIN

DATE: 23 APRIL 2001

PAGE 1 OF 7

**/// MANDATORY ////////////////////////////////////// MANDATORY ////////////////////////////////////// MANDATORY ///**

## NON-ROTATING SWASHPLATE ASSEMBLY BUSHING REWORK AND LONGITUDINAL DRIVE LINK ASSEMBLY INSPECTION AND REPAIR

### 1. PLANNING INFORMATION

#### A. Aircraft Affected:

MD900 helicopters, serial number 900-00008 thru 900-00068.

#### B. Assembly/Components Affected By This Notice:

Non-Rotating Swashplate Assembly (P/N 900C2010192-105, -107, -109 and -111) and Longitudinal Drive Link Assembly P/N 900C2010212-101. Non-Rotating Swashplate Assemblies (P/N 900C2010192-111) previously reworked in accordance with Service Bulletin SB900-071 meet the intent of this Bulletin and do not require further rework.

#### C. Reason:

There have been reports of damage to the longitudinal drive link assembly caused by the sharp inner edge of the bushing in the non-rotating swashplate assembly. This Bulletin is issued to cover non-rotating swashplate assembly parts not included in Service Bulletin SB900-071.

Failure to comply with this Service Bulletin may result in non-repairable damage to the longitudinal drive link and eventual loss of longitudinal control of the helicopter.

#### D. Description:

Procedures in this Bulletin provide owners and operators with information pertaining to rework of the bushing in the non-rotating swashplate assembly and inspection and repair of the longitudinal drive link assembly.

#### E. Time of Compliance:

The requirements of this Bulletin shall be accomplished at the next 100 hour inspection or within three months of the issue date of this Service Bulletin, whichever occurs first.

#### F. IDENTIFICATION:

N/A

#### G. FAA Approval:

The technical design aspects of this Bulletin are FAA Approved.

#### H. Manpower:

Two (2) man-hours.

#### I. Interchangeability:

None

**/// MANDATORY ////////////////////////////////////// MANDATORY ////////////////////////////////////// MANDATORY ///**

DATE: 23 APRIL 2001  
PAGE 2 OF 7

# SERVICE BULLETIN

**MANDATORY**

## **J. Material/Part Availability:**

Contact MDHI Warranty and Repair Dept.

REPLACEMENT PARTS/SUPPLIES			
Nomenclature	Part No.	Qty.	Source
Link Assembly, Longitudinal Drive	900C2010212-101	1	MDHI
Primer, Epoxy	MIL-P-85582, Type1, Class 2	AR	Deft, Inc. 17451 Von Karman Avenue, Irvine, CA 92714 (714) 474-0400
Chemical Film	Iridite 14-2 Al-Coat	AR	Richardson Company Allied-Kelite Products Division 2400 E. Devon Avenue, Des Plaines, IL
Varnish, moisture resistant	MIL-V-173, Type II	AR	Commercial

## **K. Warranty Policy:**

MDHI Warranty Department will provide acceptable replacement components at no cost to the operator, if parts cannot be reworked per instructions contained within this Service Bulletin. The replacement parts will be covered by the MDHI new part warranty. MDHI will also credit those affected operators with two (2) hours of labor warranty (spares credit). Return affected components to MDHI Warranty Department within five (5) days of removal.

## **L. Tooling:**

N/A

## **M. Weight and Balance:**

N/A

## **N. Electrical Load Data:**

N/A

## **O. Other Publications Affected:**

MD900 Rotorcraft Maintenance Manual (CSP-900RMM-2), Illustrated Parts Listing (CSP-900IPL-4).

## **2. ACCOMPLISHMENT INSTRUCTIONS**

### **A. Rework non-rotating swashplate assembly:**

(Ref. Figure 1)

- (1). Remove longitudinal drive link assembly per instructions contained in the Rotorcraft Maintenance Manual (CSP-900RMM-2, Section 62-30-00).

**MANDATORY**





DATE: 23 APRIL 2001  
PAGE 4 OF 7

# SERVICE BULLETIN

**/// MANDATORY ////////////////////////////////////// MANDATORY ////////////////////////////////////// MANDATORY ///**

## **3. DISPOSITION OF PARTS REMOVED**

Return to MD Helicopters, Inc. (MDHI) Warranty and Repair Dept.

## **4. COMPLIANCE RECORD**

Record compliance to this Service Bulletin in the Compliance Record section of the helicopter Log Book, update the non-rotating swashplate assembly Component Record card to reflect compliance with this Bulletin, and complete and return the Bulletin Response Form.

## **5. POINTS OF CONTACT**

For further assistance, contact your local MDHI Field Service Representative (refer to the latest revision of the "At Your Service" handbook for address and telephone numbers) or contact the Field Service Department at MDHI, Mesa, Arizona. Telephone 1-800-388-3378 or (480) 346-6387. DATAFAX: (480) 346-6813.

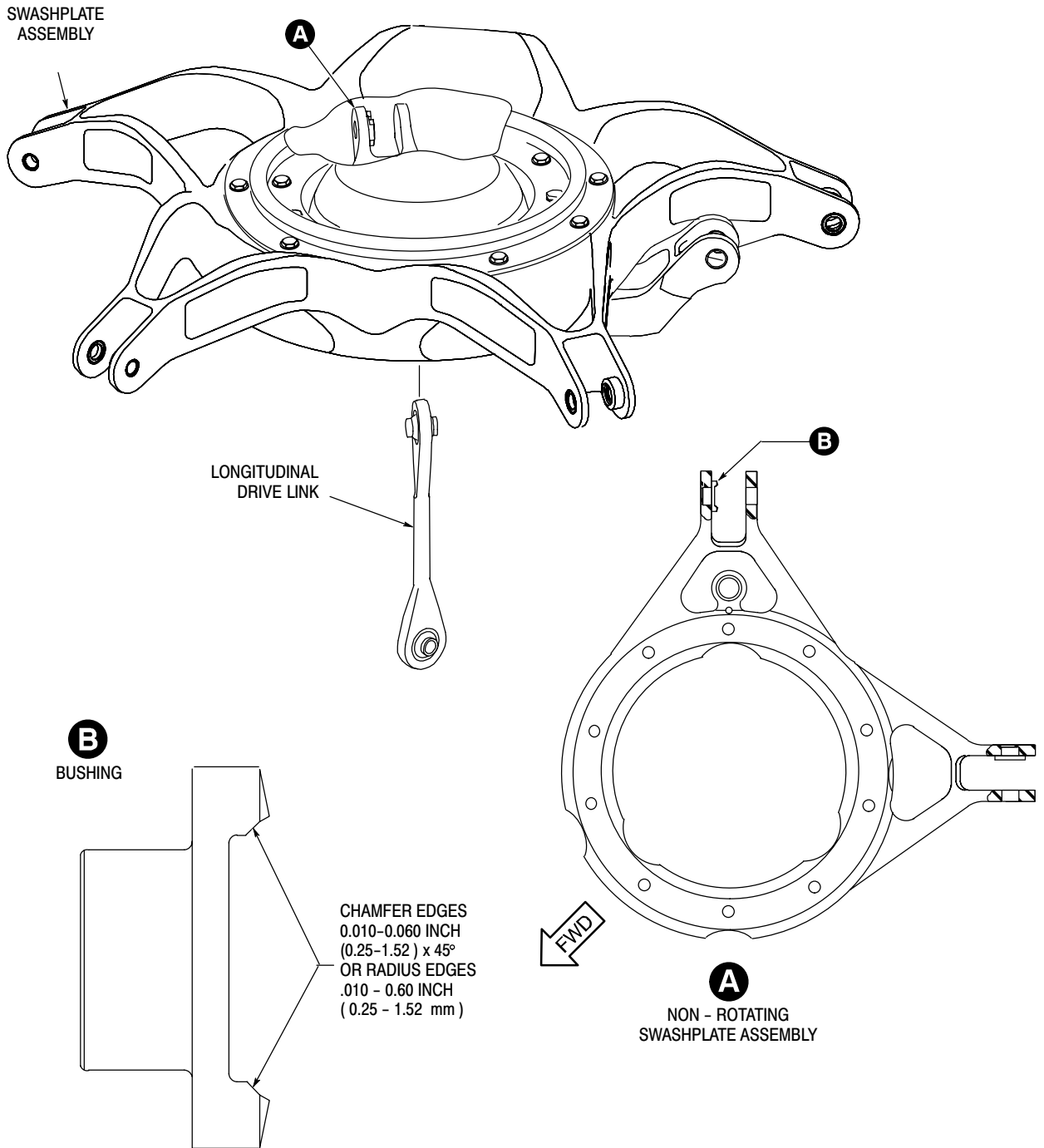
**/// MANDATORY ////////////////////////////////////// MANDATORY ////////////////////////////////////// MANDATORY ///**

# SERVICE BULLETIN

DATE: 23 APRIL 2001

PAGE 5 OF 7

**MANDATORY**



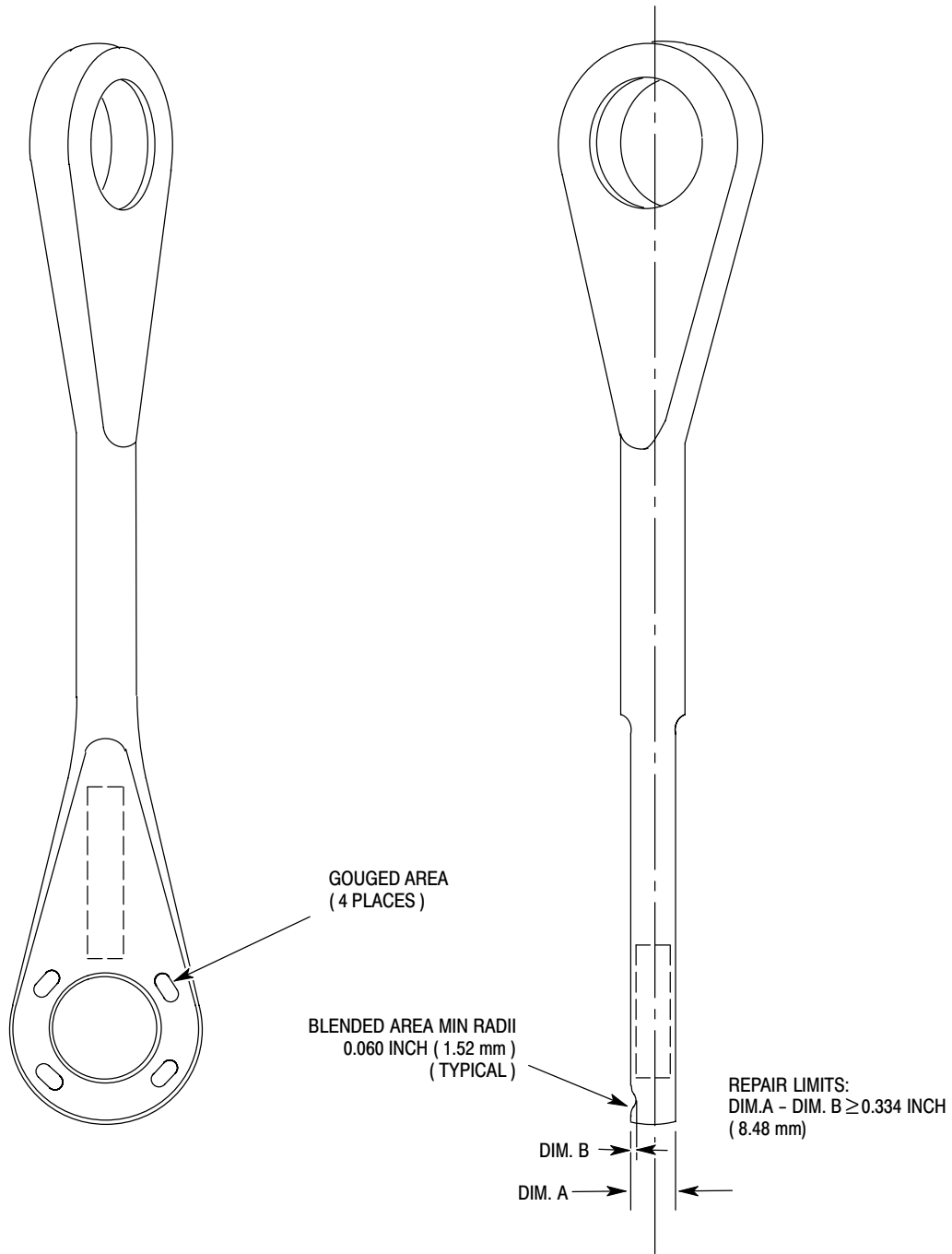
9B62-151

**Figure 1. Swashplate Rework**

**MANDATORY**

# SERVICE BULLETIN

**MANDATORY**



9B62-152

**Figure 2. Repair of Longitudinal Drive Link**

**MANDATORY**



# SERVICE BULLETIN

DATE: 23 APRIL 2001

PAGE 7 OF 7

**/// MANDATORY ////////////////////////////////////// MANDATORY ////////////////////////////////////// MANDATORY ///**

## NON-ROTATING SWASHPLATE ASSEMBLY BUSHING REWORK AND LONGITUDINAL DRIVE LINK ASSEMBLY INSPECTION AND REPAIR

**Bulletin Response Form:** Please fill in the following information, and return to MDHI Field Service. This form may be faxed to MDHI Field Service Department at (480) 346-6813.

Operator or Company Name:

Name of Contact Person:

Address:

Telephone:

Fax:

Aircraft Ser. No.:

Aircraft Registration Number:

Aircraft Total Time:

Date of Compliance:

Swashplate Assembly P/N:

Non-rotating Swashplate Assembly P/N:

Rotating Swashplate Assembly P/N:

**/// MANDATORY ////////////////////////////////////// MANDATORY ////////////////////////////////////// MANDATORY ///**