



SERVICE BULLETIN

DATE: 05 JUNE 1997
PAGE 1 OF 3

/// MANDATORY ////////////////////////////////////// MANDATORY ////////////////////////////////////// MANDATORY ///

* Supersedes Service Bulletin SB900-055, dated 09 May 1997.

ADJUSTABLE COLLECTIVE DRIVE LINK REPLACEMENT

1. PLANNING INFORMATION:

- A. Aircraft Affected: All McDonnell Douglas Helicopter Systems (MDHS) MD900 Series Helicopters, serial number 900-00002 thru 900-00051.
- B. Assembly/Components Affected by this Notice:
Adjustable Collective Drive Link Assembly (P/N 900C2010233-103, -105)
- C. Time of Compliance: The requirements of this Bulletin shall be accomplished prior to any further ground or flight operations.

NOTE

Compliance to the requirements of this Bulletin will remove the requirements of Service Bulletin SB900-056, dated 28 May 1997. Refer to CSP-900RMM-2 (Revision 11 or later), Section 04-00-00, for the current life-limited time of the affected part.

- D. Reason: As a result of testing, MDHS has determined that the 900C2010233-103, -105 needs to be replaced in all MD900 series helicopters. Failure to comply with the requirements of this Bulletin may result in parts failing in service with delayed or degraded response to cyclic and collective inputs requiring an emergency landing.
- E. Description: Procedures in this Bulletin provide operators with information to replace all affected adjustable collective drive link assemblies with acceptable link assemblies in the field.
- F. FAA Approval:
The technical design aspects of this Service Bulletin are FAA approved.
- G. Manpower:
Accomplishment of this Bulletin will require approximately two (2) manhours.
- H. Interchangeability: N/A
- I. Material/Part Availability: Contact MDHS Field Service Dept.

REPLACEMENT PARTS/SUPPLIES			
Nomenclature	Part No.	Qty.	Source
Link Assembly, Collective Drive, Adjustable	900C2010233-107	1	MDHS

/// MANDATORY ////////////////////////////////////// MANDATORY ////////////////////////////////////// MANDATORY ///



DATE: 05 JUNE 1997

PAGE 2 OF 3

SERVICE BULLETIN

/// MANDATORY ////////////////////////////////////// MANDATORY ////////////////////////////////////// MANDATORY ///

J. Warranty Policy: MDHS will provide all parts required to accomplish this Bulletin at no charge to the operator. Additionally, MDHS will provide (2) hours labor credit. Contact the MDHS Warranty and Repair Department.

K. Tooling: N/A

L. Weight and Balance: N/A

M. Electrical Load Data: N/A

N. Other Publications Affected:

Rotorcraft Maintenance Manual (CSP-900RMM-2, Section 04-00-00). Rotorcraft Parts Manual (CSP-900IPL-4, Section 62-00-00).

2. ACCOMPLISHMENT INSTRUCTIONS:

A. Remove adjustable collective drive link assembly (P/N 900C2010233-103 or -105) per instructions contained in 62-30-00 (Rev. 11 or later).

B. Install adjustable collective drive link assembly (P/N 900C2010233-107) per instructions contained in 62-30-00 (Rev. 11 or later).

The overall length may be adjusted to allow installation. If adjustment is necessary, cut safety wire, loosen both jamnuts and rotate barrel similar to PC link adjustment. Torque jamnuts to 660 - 780 inch-pounds (74.55 - 88.11 Nm) and install safety wire.

3. DISPOSITION OF PARTS REMOVED:

Return removed parts to MDHS for disposition.

4. COMPLIANCE RECORD: Record compliance to this Service Bulletin in the Compliance Record section of the helicopter Log Book. Add serial numbers and times to Aircraft Component Log.

POINTS OF CONTACT: For further assistance, contact MDHS Field Service Representative (refer to the "At Your Service" handbook for address and telephone numbers) or contact the Field Service Department at MDHS, Mesa, Arizona. Telephone: 1-800-388-3378 or (602) 891-6342. DATAFAX: (602) 891-6782.

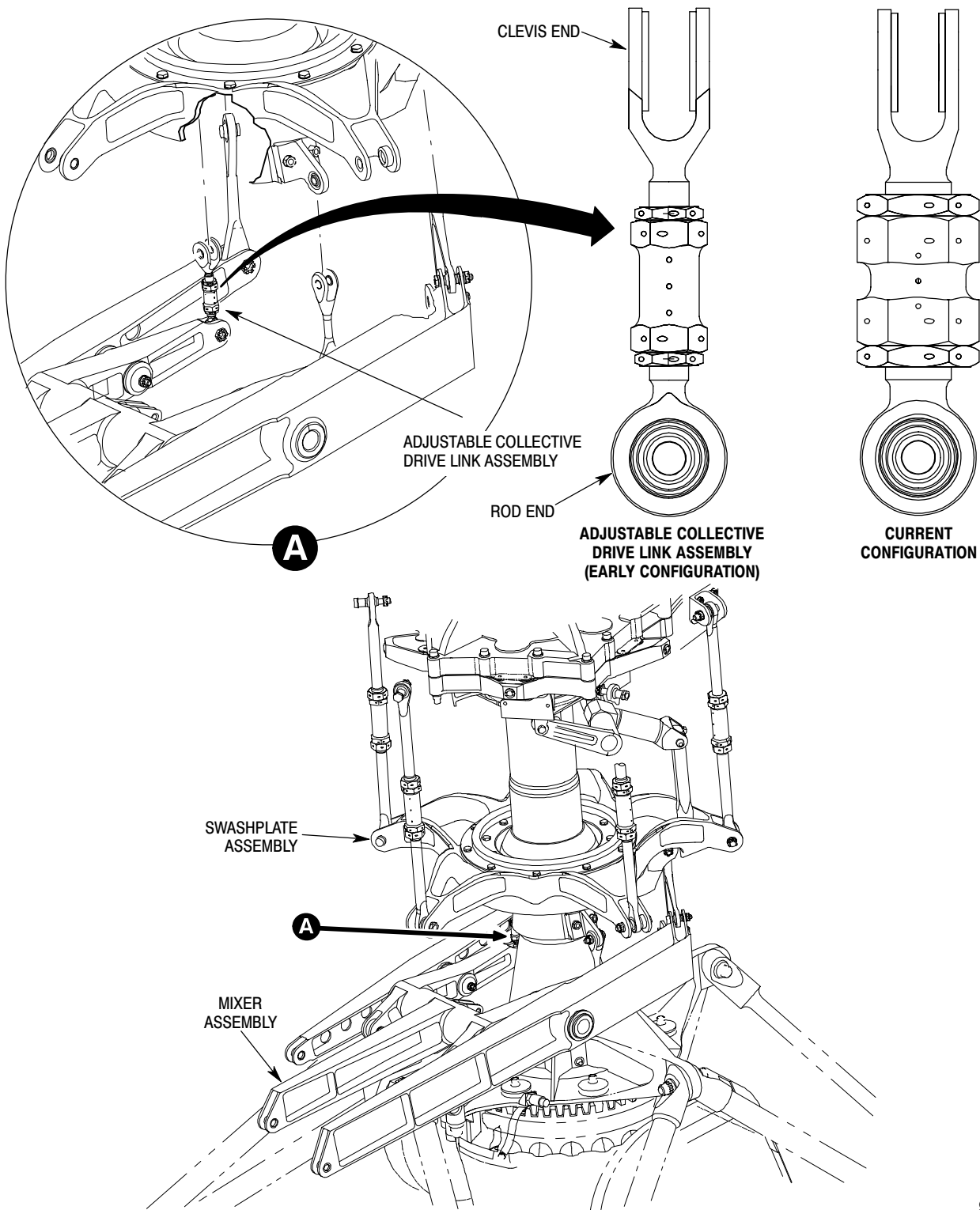
/// MANDATORY ////////////////////////////////////// MANDATORY ////////////////////////////////////// MANDATORY ///

SERVICE BULLETIN

DATE: 05 JUNE 1997

PAGE 3 OF 3

MANDATORY **MANDATORY** **MANDATORY**



9B62-062

Figure 1. Adjustable Collective Drive Link Assembly Installation

MANDATORY **MANDATORY** **MANDATORY**