



SERVICE BULLETIN

DATE: 29 OCTOBER 1996
PAGE 1 OF 7

/// MANDATORY ////////////////////////////////////// MANDATORY ////////////////////////////////////// MANDATORY ///

COCKPIT AND CABIN DOOR HOUSING REPLACEMENT

1. PLANNING INFORMATION:

A. Aircraft Affected:

McDonnell Douglas Helicopter Systems (MDHS) MD900 Series Helicopters, serial numbers 00008 thru 00058.

B. Assembly/Components Affected by this Notice:

- Cockpit Door Latching Mechanism, P/N 900F3305181-101/-102 (Aircraft Serial No. 8 thru 48)
- Cockpit Door Latching Mechanism, P/N 900F3305184-101/-102 (Aircraft Serial No. 49 and subsequent)
- Cabin Door Latching Mechanism, P/N 900F3305577-101/-102 (Aircraft Serial No. 8 thru 32)
- Cabin Door Latching Mechanism, P/N 900F3305578-101/-102 (Aircraft Serial No. 33 thru 48)
- Cabin Door Latching Mechanism, P/N 900F3305580-101/-102 (Aircraft Serial No. 49 and subsequent)

C. Reason:

Operators have reported two malfunctions with the pin/cam assembly, within the cockpit and cabin door mechanism housing assembly. The pin has separated from the cam in both cases, rendering the inside door handle inoperable. Failure to comply with the requirements of this Bulletin may result in malfunction of the door latching mechanism. This condition will not allow the doors to be opened from inside the cockpit or cabin. NOTE: The cockpit and cabin door emergency egress feature will still be available.

D. Description:

Procedures in this Bulletin provide owners and operators with instructions to replace the existing housing assemblies on both the cockpit and cabin doors with improved housings.

E. FAA Approval:

The technical design aspects of this Service Bulletin are FAA Approved.

F. Manpower:

The requirements of this Service Bulletin can be accomplished by one person and will require approximately 1.5 manhours.

G. Time of Compliance:

The requirements of this Bulletin shall be accomplished upon receipt of Housing Assemblies, P/N 68606-3M/4M (cockpit door) and P/N 68623-1M/2M (cabin door) or no later than 31 March 1997.

H. Interchangeability:

N/A

/// MANDATORY ////////////////////////////////////// MANDATORY ////////////////////////////////////// MANDATORY ///

DATE: 29 OCTOBER 1996
PAGE 2 OF 7

SERVICE BULLETIN

MANDATORY

I. Material/Part Availability:

Refer to Warranty Policy spelled out below.

COCKPIT DOOR LATCH MECHANISM			
REPLACEMENT PARTS/SUPPLIES (Ref. Figure 1)			
Nomenclature	Part No.	Qty.	Source
Cockpit Door Housing Assembly (LH) Item 11	68606-3M	1	Ref. Section J.
Cockpit Door Housing Assembly (RH) Item 12	68606-4M	1	Ref. Section J.
Cotter Pin, Item 13	MS24665-86	2	Ref. Section J.

CABIN DOOR LATCH MECHANISM			
REPLACEMENT PARTS/SUPPLIES (Ref. Figure 2)			
Nomenclature	Part No.	Qty.	Source
Cabin Door Housing Assembly (LH) Item 11	68623-1M	1	Ref. Section J.
Cabin Door Housing Assembly (RH) Item 12	68623-2M	1	Ref. Section J.
Cotter Pin, Item 13	MS24665-86	2	Ref. Section J.

J. Warranty Policy:

The replacement parts will be covered by MDHS new part warranty and replacement housing assemblies will be provided at no cost to the operator if this Bulletin is accomplished prior to compliance deadline.

For customers within the continental United States, contact Adams Rite Sabre International at the address given on page 7 of this Bulletin to arrange for retrofit of parts.

For customers outside the continental United States, contact MDHS Commercial Warranty and Repair Department for replacement housing assemblies. Return affected housing assemblies to Commercial Warranty and Repair within five days of removal.

K. Tooling:

N/A

L. Weight and Balance:

N/A

M. Electrical Load Data:

N/A

MANDATORY



SERVICE BULLETIN

DATE: 29 OCTOBER 1996

PAGE 3 OF 7

/// MANDATORY ////////////////////////////////////// MANDATORY ////////////////////////////////////// MANDATORY ///

N. Other Publications Affected:

N/A

2. ACCOMPLISHMENT INSTRUCTIONS:

NOTE: The following instructions and figures show details for modifications to the LH side only. RH side is opposite.

A. PART 1. Cockpit Door Mechanism (Refer to Figure 1)

- (1). Turn both the inside and outside handles to the **SAFELOCK** position.
- (2). Remove screws (1) & (2) and interior handle (3). Note position of screws (1) & (2) for later reinstallation.
- (3). Remove interior trim panel.
- (4). Remove cotter pin (5) and discard. Remove and retain washer (6) and clevis pin (7).
- (5). Remove housing 68606-3/-4 by removing screws (8) & (9) and exterior handle (10). Note position of screws (8) & (9) for later reinstallation.
- (6). Install modified housing (11) & (12) using screws (8) & (9) and exterior handle (10). Ensure exterior handle lines up with the **SAFELOCK** position on the exterior decal. Reattach housing to mechanism using washer (6) and clevis pin (7). Install new cotter pin (13).
- (7). Reinstall interior trim panel (4).
- (8). Reinstall interior handle (3) using screws (1) & (2). Ensure interior handle is in the **SAFELOCK** position.
- (9). Check operation of the door mechanism per CSP-900RMM-2, Section 52-00-00, page 603, step B.

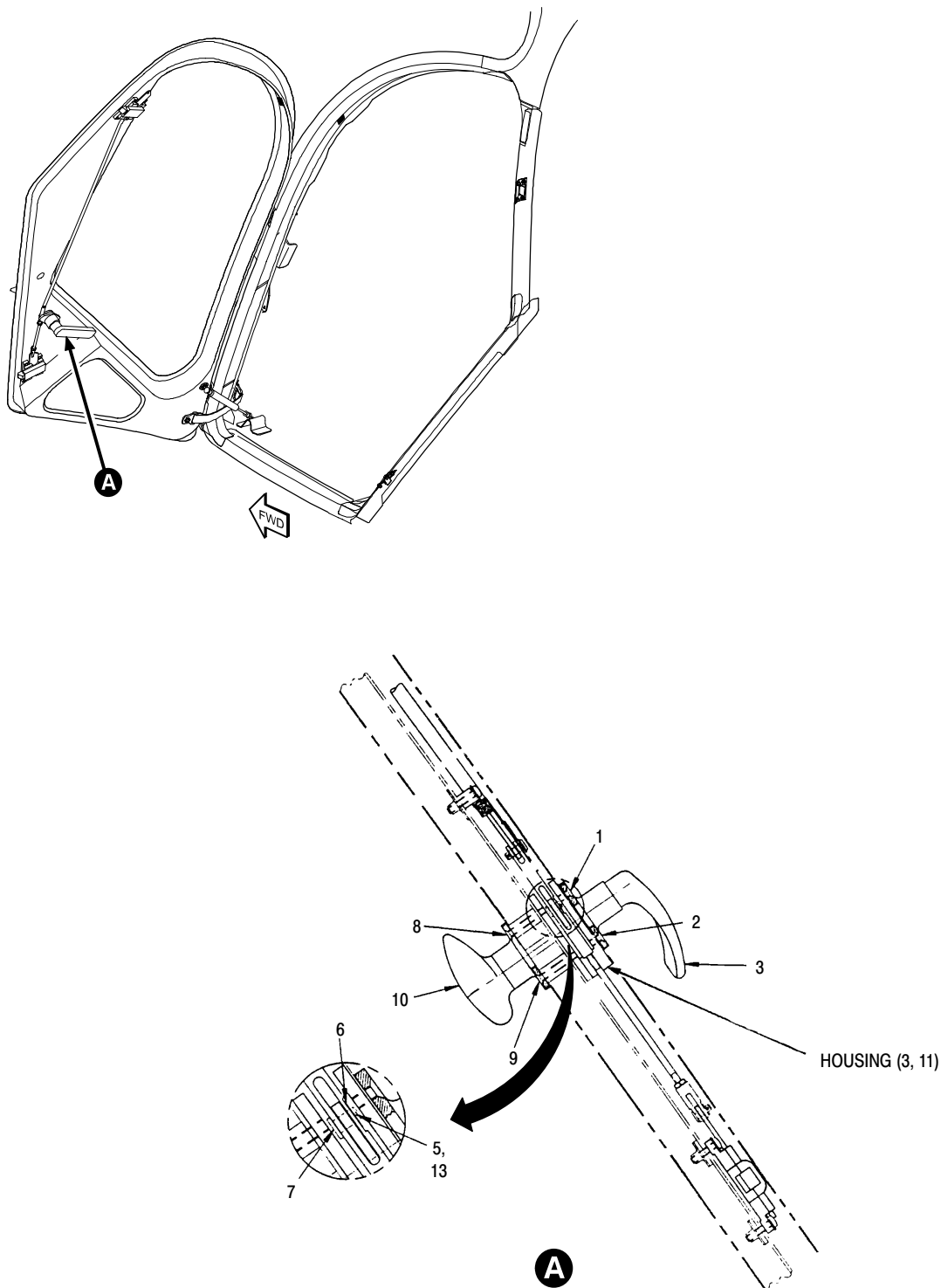
/// MANDATORY ////////////////////////////////////// MANDATORY ////////////////////////////////////// MANDATORY ///

DATE: 29 OCTOBER 1996

PAGE 4 OF 7

SERVICE BULLETIN

MANDATORY MANDATORY MANDATORY



9B52-038

Figure 1. Cockpit Door Mechanism

Copyright 1999 by MD Helicopters Inc.

This document may be reproduced and distributed provided no fee is charged, the text is not modified, and this copyright notice is included.

MANDATORY MANDATORY MANDATORY



SERVICE BULLETIN

DATE: 29 OCTOBER 1996

PAGE 5 OF 7

/// MANDATORY ////////////////////////////////////// MANDATORY ////////////////////////////////////// MANDATORY ///

B. PART 2. Cabin Door Mechanism (Refer to Figure 2)

- (1). Turn both the outside and inside handles to the **SAFELOCK** position.
- (2). Remove D-Ring (1) from the cabin door by removing four screws and washers (2) & (3) and two screws (4). Retain screws and washers for reinstallation.
- (3). Remove cotter pin (5) and discard. Remove and retain clevis pin (6) and washer (7).
- (4). Remove housing 68623-1/2 by removing screws (8) & (9) and exterior handle (10). Note position of screws (8) & (9) for later reinstallation.
- (5). Install modified housing (11) & (12) using screws (8) & (9) and exterior handle (10). Ensure exterior handle lines up with the **SAFELOCK** position on the exterior decal. Reattach housing to mechanism using washer (7) and clevis pin (6). Install new cotter pin (13).
- (6). Reinstall D-Ring (1) using screws (2) & (4) and washers (3). Ensure D-Ring is in the **SAFELOCK** position.
- (7). Check operation of the door mechanism per CSP-900RMM-2, Section 52-00-00, page 603, step C.

/// MANDATORY ////////////////////////////////////// MANDATORY ////////////////////////////////////// MANDATORY ///

DATE: 29 OCTOBER 1996
PAGE 6 OF 7

SERVICE BULLETIN

MANDATORY MANDATORY MANDATORY

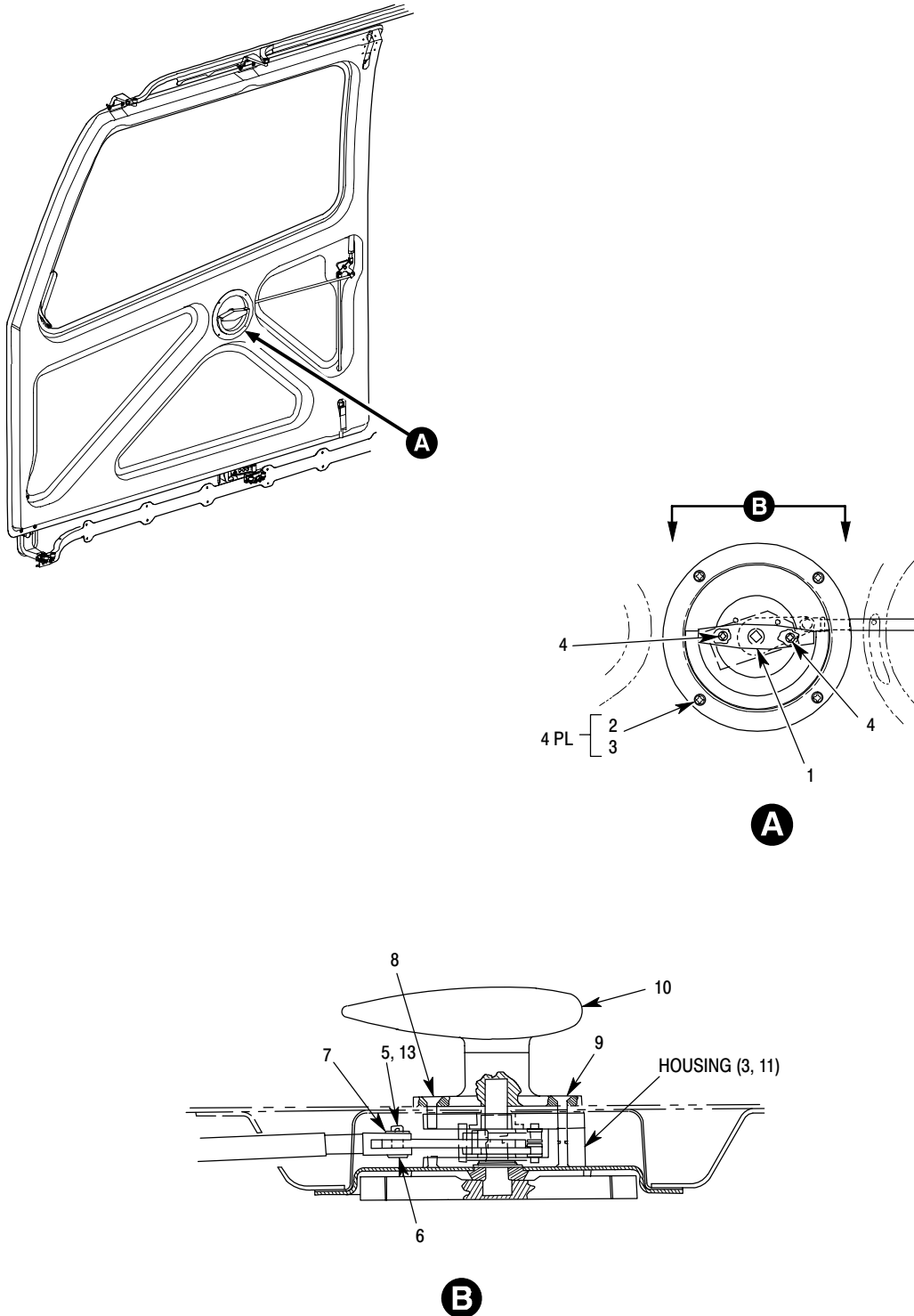


Figure 2. Cabin Door Mechanism

Copyright 1999 by MD Helicopters Inc. This document may be reproduced and distributed provided no fee is charged, the text is not modified, and this copyright notice is included.

9B52-039

MANDATORY MANDATORY MANDATORY



SERVICE BULLETIN

DATE: 29 OCTOBER 1996

PAGE 7 OF 7

/// MANDATORY ////////////////////////////////////// MANDATORY ////////////////////////////////////// MANDATORY ///

3. DISPOSITION OF PARTS REMOVED:

All parts shall be returned to MDHS Warranty and Repair Department within 5 days of removal.

4. COMPLIANCE RECORD:

Record compliance to this Service Bulletin in the Compliance Record section of the helicopter Log Book.

5. POINTS OF CONTACT:

For further assistance, contact your local MDHS Field Service Representative (refer to the Business Development and Customer Support handbook for address and telephone numbers) or contact the Field Service Department at MDHS, Mesa, Arizona. Telephone: 1-800-388-3378 or (602) 891-6342. DATAFAX: (602) 891-6782, or contact:

Adams Rite Sabre International
540 West Chevy Chase Drive
Glendale, CA 91204
Phone: (818)241-5121
FAX: (818)500-7239
Contact: Roger Snyder, Director, Customer Support

/// MANDATORY ////////////////////////////////////// MANDATORY ////////////////////////////////////// MANDATORY ///