



# SERVICE BULLETIN

DATE: 24 MAY 1996  
PAGE 1 OF 4

**MANDATORY**

## AFT CABIN HEAT MODIFICATION

### 1. PLANNING INFORMATION:

#### A. Aircraft Affected:

All McDonnell Douglas Helicopter Systems (MDHS) MD900 helicopters, serial number 900-00002 thru 900-00039.

#### B. Assembly/Components Affected by this Notice:

900P7250202-101 Rev. AH Heater/Defog Installation; 900PG250309 Rev B. Cabin Heat Modification.

#### C. Reason:

Compliance with this Bulletin and SB 900-016 will allow removal of the cabin heat restriction placard in the cabin compartment and allow the cabin heat to be used in temperatures above 40° F (5° C).

#### D. Description:

This Bulletin provides operators with instructions to modify the cabin heat installation by adding insulation material to the fuselage and relocating the aft cabin heat ejector.

#### E. FAA Approval:

The technical design aspects of this Service Bulletin are FAA Approved.

#### F. Manpower:

Accomplishment of this Bulletin will require approximately three (3) man-hours.

#### G. Time of Compliance:

The requirements of this Bulletin shall be accomplished within twelve (12) months from the date of this Bulletin.

#### H. Material/Part Availability:

PARTS/SUPPLIES			
Nomenclature	Part No.	Qty.	Source
Spacer	NAS43HT3-24	1	MDHS
Spacer	NAS43HT3-32	1	MDHS
Screw	NAS603-14P	1	MDHS
Screw	NAS603-12P	1	MDHS
Washer	AN960C10L	2	MDHS
Foam (12" x 3")	HMS17-1186 (MDHS P/N RM 010455)	1	MDHS
Silicone Compound	Silastic 732 or RTV 157 (MDHS P/N RM 002212)	A/R	MDHS

**MANDATORY**



DATE: 24 MAY 1996  
PAGE 2 OF 4

# SERVICE BULLETIN

/// MANDATORY ////////////////////////////////////// MANDATORY ////////////////////////////////////// MANDATORY ///

## I. Warranty Policy:

N/A

## J. Other Publications Affected:

CSP-900RFM-1, Revision 3 or later.

## K. Weight and Balance:

Not Affected

## 2. ACCOMPLISHMENT INSTRUCTIONS:

These instructions contain references to maintenance practices in CSP-900RMM-2 The references to procedures appear as (Ref. Section 21-40-00) ect.; Consumable Materials as (C233) ect., and Warnings with descriptive titles for hazardous material.

---

### Consumable Materials (Ref. Section 91-00-00)

<u>Item</u>	<u>Nomenclature</u>
C221	Silicone Compound
C233	Iridite
C709	Adhesive Tape
C801	Foam

---

### (1). **Removal**

- (a). Remove cabin seats, if applicable (Ref. Section 25-20-00).
- (b). Remove cabin carpet, if applicable (Ref. Section 25-20-00).
- (c). Gain access to cabin heat ejector by removing right sidewall insulation panel JEC7182-1 (Ref. Section 25-20-00).
- (d). Remove baggage compartment carpet, if applicable (Ref. Section 25-50-00)
- (e). Remove baggage compartment interior trim soft insulation panel JEC7130-2 and closeout panel JEC7127-2 (Ref. Section 25-50-00).

### (2). **Installation Instructions**

- (a). If installed, remove aft cabin heat ejector caution placard HS5832-21 and scrap (Ref. Service Bulletin SB900-009).
- (b). Remove aft cabin heat ejector (Ref. Section 21-40-00).
- (c). Elongate 0.191-0.197 holes in fuselage station 230.50 as shown in Figure 1.

### **WARNING: Chemical Coating**

- (d). Apply surface touch up treatment-chemical coating, using Iridite 14-2 (C233) to elongated holes (Ref. Section 20-40-00).

/// MANDATORY ////////////////////////////////////// MANDATORY ////////////////////////////////////// MANDATORY ///

# SERVICE BULLETIN

DATE: 24 MAY 1996

PAGE 3 OF 4

**MANDATORY**



**WARNING: Silicone Compound**



(e). Install flexible polyimide foam (HMS 17-1186) with silicone compound C221, Silastic 732 or RTV 157. Sandwich foam between fuselage skin and aft cabin ejector location as shown in Figure 1.

**NOTE:** Ensure aft cabin heat ejector is installed as far inboard as possible to elongated holes.

(f). Install cabin heat ejector (Ref. Section 21-40-00), except:

- 1). Spacer (NAS43HT3-32) replaces spacer (NAS43HT3-24) and screw (NAS603-14P) replaces (NAS603-12P) screw at the upper standoff mount.
- 2). Spacer (NAS43HT3-24) replaces spacer (NAS43HT3-16) and screw (NAS603-12P) replaces (NAS603-10P) screw at the lower standoff mount.

**NOTE:** Wrap tube connection flexible coupling assembly with foam lining and tape. Overlap the existing insulation on tube and line assemblies one inch.

3). Install foam lining (C801) over tube connections and wrap with tape (C709).

(g). Install right sidewall insulation panel JEC7182-1 (Ref. Section 52-20-00), except:

- 1). Install ejector gasket (900P2250253-101) between aft cabin heat ejector and interior trim insulation panel.
- 2). Install ejector screen (900P2250255-101) with screws (NAS603-10P), washers (AN960KD-10LL) as shown in Figure 1.

**(3). Installation**

- (a). Install baggage compartment interior trim soft insulation panel JEC7130-2 and closeout panel JEC7127-2 (Ref. Section 25-20-00).
- (b). Install baggage compartment carpet, if applicable (Ref. Section 25-20-00).
- (c). Install cabin carpet, if applicable (Ref. Section 25-20-00).
- (d). Install cabin seats, if applicable (Ref. Section 25-20-00).

**3. COMPLIANCE RECORD:**

Record compliance to the accomplishment instructions of this Service Bulletin in the Compliance Record section of the helicopter Log Book.

**4. POINTS OF CONTACT:**

For further information, contact your local MDHS Field Service Representative (refer to the latest revision of the Product Support handbook for address and telephone numbers) or contact the Field Service Department at MDHS, Mesa Arizona. Telephone: 1-800-388-3378 or (602) 891-6342.

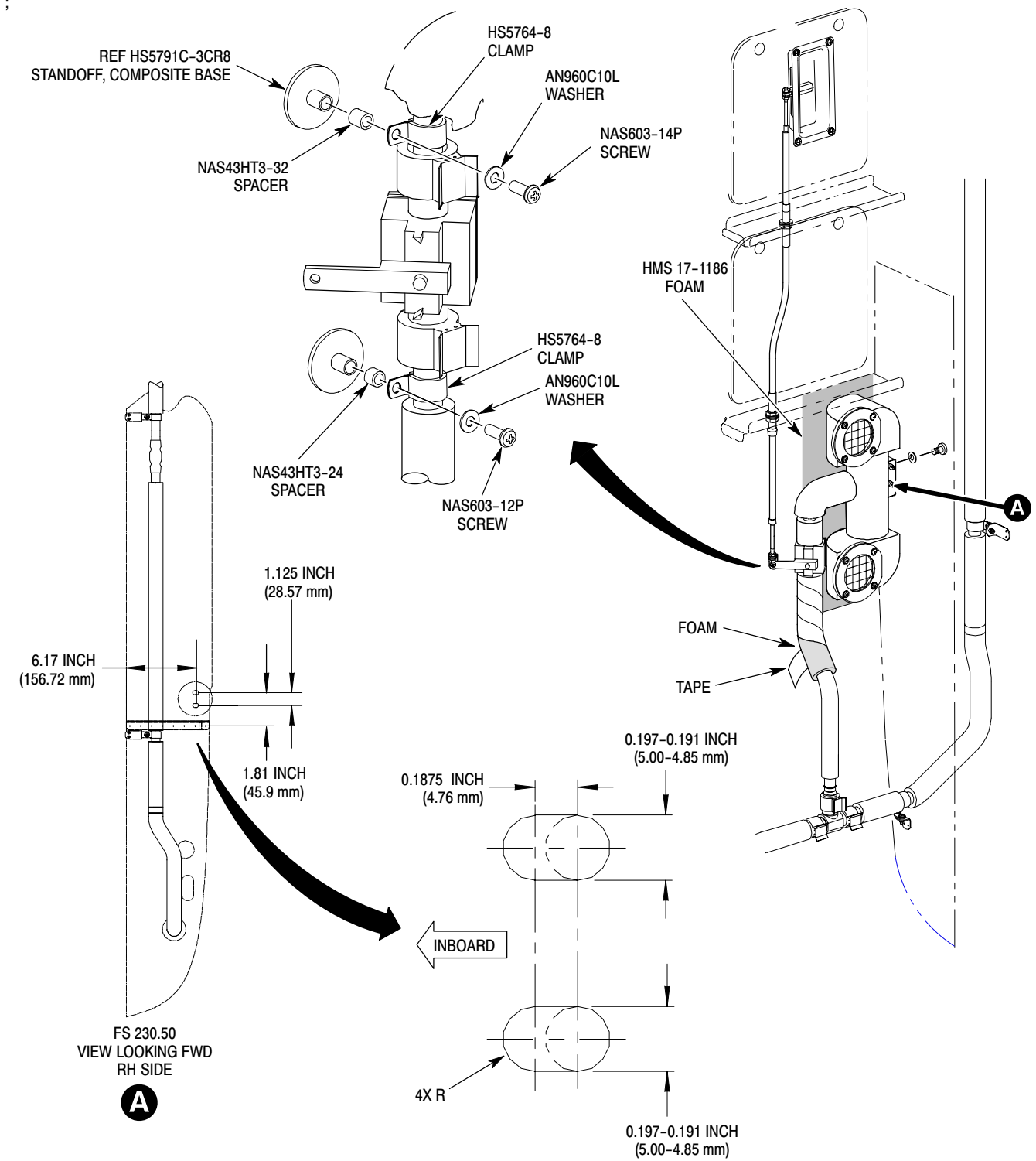
Commercial Spare Parts Sales  
 U.S. and Canada Call 1-800-388-3378  
 International Call 1-602-891-5050

**MANDATORY**

DATE: 24 MAY 1996  
PAGE 4 OF 4

# SERVICE BULLETIN

**MANDATORY MANDATORY MANDATORY**



**Figure 1. Aft Cabin Heat Ejector**

**MANDATORY MANDATORY MANDATORY**