

SERVICE LETTER

DATE: 09 NOVEMBER 2009
PAGE 1 OF 4

*Supersedes Service Letter SL 900-021R1, dated 3 January 1997.

CABIN SEAT – 4 POINT RESTRAINT SYSTEM OPTION

MODELS AFFECTED: All MD900 helicopters that have the 3 point cabin seat restraint system installed.

*MDHI has certified an upgraded 4 point cabin seat restraint system as a replacement to the 3 point system. The 900N3202141-101, -103, and -105 cabin seat can be changed to accept the new 4 point restraint. The four point restraint can be installed on the 900N3202141-107 cabin seat without change. New 4 point restraints (4-01-225501, 4-01-115501) are to be procured directly from the manufacturer, refer to Replacement Parts/Supplies.

REPLACEMENT PARTS/SUPPLIES				
Item*	Nomenclature	Part No.	Qty.	Source
8	Restraint Assembly	4-01-225501 4-01-115501 (Preferred Part)	1	Schroth Restraint Systems 1942 Broadway Suite 400 Boulder, CO 80302 (303) 447-1700
7	Bushing	900N5202000-5 or 5MD42103-001	1	MDHI
12	Bushing	900N5202000-7 or 5MD42002-006	2	MDHI
9	Screw	MS27039-4-28	2	Commercial
13	Nut	MS21042-4	4	Commercial
11	Washer	AN960C416L	2	Commercial
10	Washer	AN960KD616	2	Commercial
2	Spring Pin	MS16562-18	4	Commercial
6	Rivet	CR3213-5-3	11	Commercial
15	Washer	AN60-616L	4	MDHI or Commercial
16	Washer	AN60KD416	2	MDHI or Commercial
3	Fabric Assembly Clip	5MD42110-511	N/A	MDHI or Commercial
4	Hinge Fitting Assembly	5MD42110-509	N/A	MDHI or Commercial
14	Headrest	5MD42130-503	1	MDHI or Commercial

***NOTE:** REF. FIGURE 1 OF THIS SERVICE LETTER

*Copyright 1999-2009 by MD Helicopters Inc.
This document may be reproduced and distributed provided no fee is charged,
the text is not modified, and this copyright notice is included.*

SERVICE LETTER

DATE: 09 NOVEMBER 2009

PAGE 2 OF 4

MATERIAL	
Nomenclature	Source
Epoxy Primer (MIL-P-23377)	Commercial

1. ACCOMPLISHMENT INSTRUCTIONS:

(Ref. Figure 1)

- (1). Remove cabin seat (1) (Ref. CSP-900RMM-2, Section 25-20-00).
- (2). Remove 3 point restraint from seat (1). Keep removed hardware for installation of 4 point restraint.

- (3). Modify the 900N3202141-101, -103, -105 and -107 cabin seat as follows:

- (a). Disconnect fabric clips (3) from hinge fitting (4).

NOTE: Headrest (14) can be removed to make it easier to change frame tube (5). To remove headrest remove spring pins (2).

- (b). Remove rivets (6) from fittings (4).

- (c). Remove frame tube (5).

- (d). Remove rivets (6) from fitting (4) on right side of frame tube (5).

- (e). Remove fitting (4) on right side of frame tube (5).

NOTE: Drill pilot holes for bushing (12) and rivets (6) aligned the same as on left side of frame tube.

- (f). Drill **0.20 in. (5.08 mm)** pilot hole for bushing (12) in frame tube (5).

- (g). Drill **0.10 in. (2.54 mm)** pilot holes for rivets (6) in frame tube (5).

- (h). Put bushing (7) in frame tube (5).

- (i). Align pilot holes for bushing (12) in bushing (7) and frame tube (5).

- (j). Drill four rivet holes, use a number 21 drill **0.159 in. (4.0386 mm)**.

Epoxy Primer and Coating



- (k). Install rivets (6). Install wet with epoxy primer.

- (l). Align hole for bushing (12) to match installation on left side of frame tube assembly.

- (m). Drill a **0.355-0.356 in. (9.017-9.0424 mm)** hole through frame tube (5) and bushing (7).

- (n). Identify tube (5) as 900N5202000-3.

- (o). Install tube (5) and fitting assemblies (4) in seat (1).

SERVICE LETTER

DATE: 09 NOVEMBER 2009
PAGE 3 OF 4

Epoxy Primer and Coating



- (p). Install rivets (6). Install wet with epoxy primer.
- (q). Install fabric clips (3) on fittings (4).
- (r). If removed, install headrest (14). Use new spring pins (2).
- (4). Install new restraint (8) on seat frame.
 - (a). Install Upper attachments hardware. Ref Figure 1 detail C
 - (b). Install Lower attachments hardware. Ref Figure 1 detail D
 - (c). Torque Nuts (Ref. CSP-SPM, Section 20-10-00)
- (5). Identify seat (1) as 900N5202000-103 adjacent to name plate.
- (6). Install cabin seat (Ref. CSP-900RMM-2, Section 25-20-00).

For further assistance, contact the Field Service Department at MDHI, Mesa, Arizona.
Telephone 1-800-388-3378 or (480) 346-6387. DATAFAX: (480) 346-6813.

SERVICE LETTER

DATE: 09 NOVEMBER 2009
 PAGE 4 OF 4

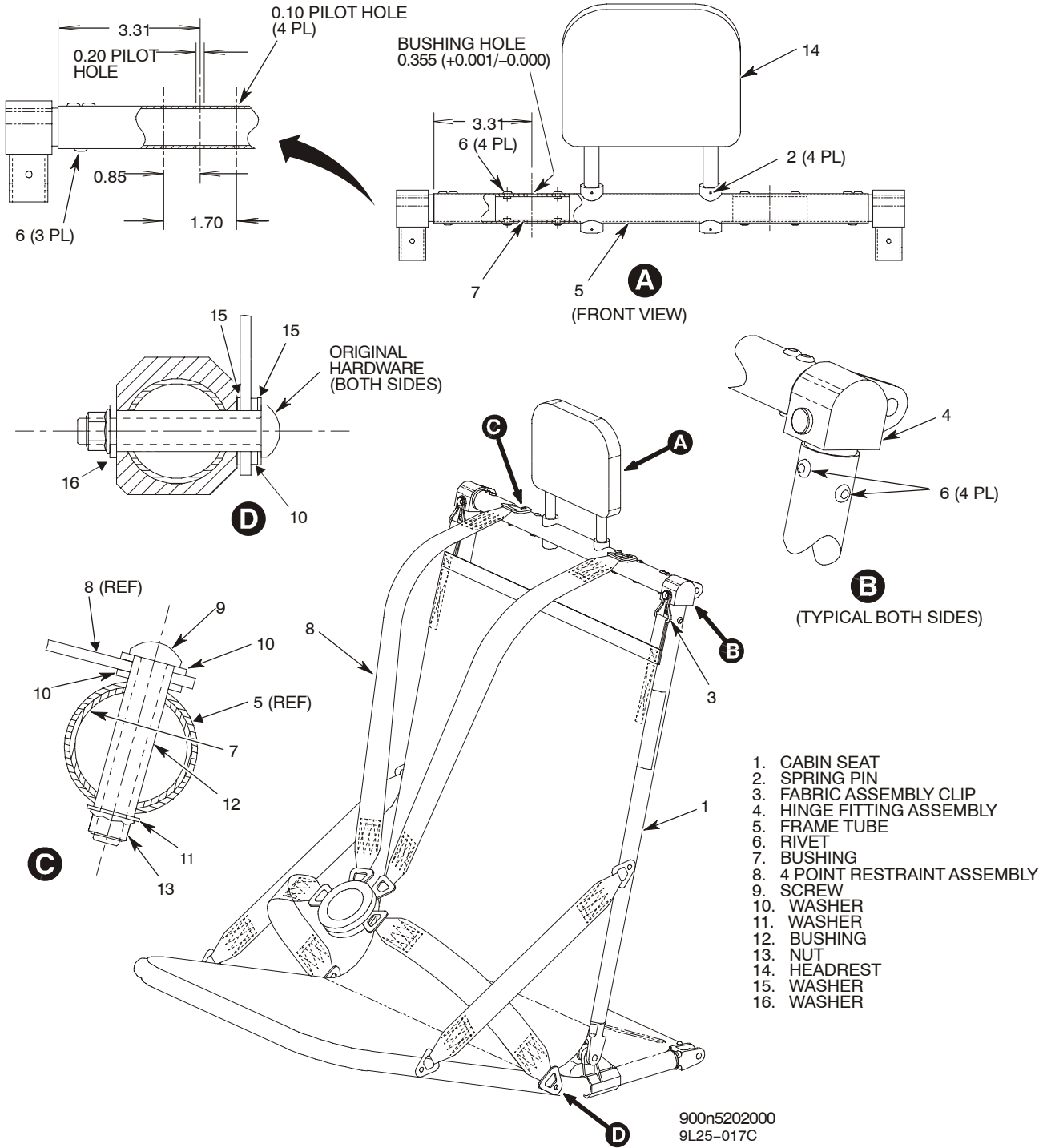


Figure 1. Seat Modification for 4 Point Restraint System

Copyright 1999-2009 by MD Helicopters Inc.
 This document may be reproduced and distributed provided no fee is charged,
 the text is not modified, and this copyright notice is included.