

# SERVICE LETTER

DATE: 3 JANUARY 1997  
PAGE 1 OF 2

\* Supersedes Service Letter SL 900-020, dated 20, December 1996.

## Hoist Inspection Hole Installation

**MODELS AFFECTED:** All McDonnell Douglas Helicopter Systems (MDHS) MD900 Series Helicopters having a hoist installed.

1. **DESCRIPTION:** This Letter provides operators with instructions to modify their hoist fairing to provide access for inspection.

MATERIAL	
Nomenclature	Source
Primer MIL-P-23377	Commercial
Topcoat to match hoist fairing	Commercial
280 grit sandpaper or finer	Commercial
2 inch diamond tipped hole saw	Commercial

### 2. ACCOMPLISHMENT INSTRUCTIONS:

(Ref. Figure 1)

A. Locate hole as shown in Figure 1.

#### CAUTION: Protective Equipment



B. Cut hole in fairing bulkhead.

- 1). Pilot hole with a high speed drill to match hole saw pilot size.
- 2). Cut hole to size with a 2 inch diamond tipped hole saw.
- 3). Smooth edge with 280 grit sandpaper or finer.

#### CAUTION: Epoxy Primer and Coating

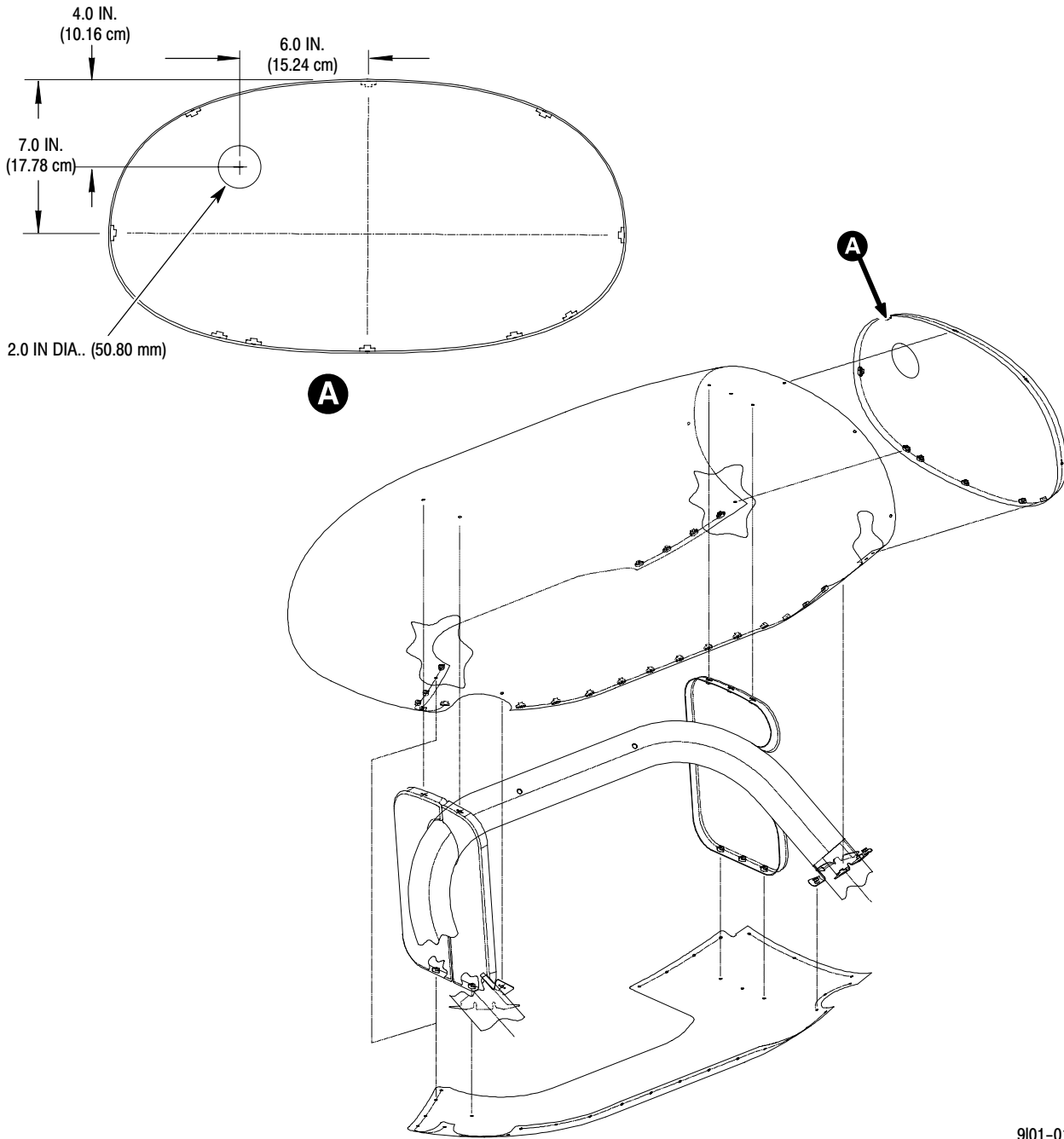


4). Seal edge of hole with primer and topcoat.

3. **COMPLIANCE RECORD:** Record compliance to this Service Letter in the Compliance Record section of the helicopter Log Book.

# SERVICE LETTER

DATE: 3 JANUARY 1997  
PAGE 2 OF 2



9101-019A

Figure 1. Inspection Hole location