



SERVICE LETTER

DATE: 05 APRIL 1996

PAGE 1 OF 5

SUBJECT: COCKPIT DOOR LATCHING MECHANISM MODIFICATION
INSTRUCTIONS

MODELS AFFECTED: All McDonnell Douglas Helicopter Systems (MDHS) MD900 series helicopters, serial numbers up to and including 900-00040, that have not been modified at MDHS.

1. PLANNING INFORMATION:

- A. Assembly/Components Affected by this Notice:** Cockpit Door Latching Mechanism, P/N 900F3305181-101.
- B. Reason:** The purpose of this letter is to inform all MD900 helicopter owners and operators of the optional modification that upgrades the cockpit door latching mechanism to the new and improved latch system configuration. This task can be accomplished by normal field maintenance. In the future, only the new configuration latching mechanism components will be provided as a spare. Customers will need to perform this modification if repairs are required to the old configuration components.
- C. Description:** Procedures in this Letter provide operators with instructions to modify the existing Cockpit Door Latching Mechanism, P/N 900F3305181-101/-102 to the upgraded configuration, P/N 900F3305187-101/-102 .
- D. Manpower:** Accomplishment of this modification will require approximately three (3) manhours.
- E. Time of Compliance:** At owner/operators discretion. NOTE: "No Cost" parts for this modification will be available until 31 December, 1996.
- F. Interchangeability:** Early configuration parts are not interchangeable with current (upgraded) configuration parts.
- G. Warranty Policy:** N/A
- H. Tooling:** No special tooling required.
- I. Weight and Balance:** N/A
- J. Electrical Load Data:** N/A
- K. Other Publications Affected:** Rotorcraft Maintenance Manual (CSP-900RMM-2), Illustrated Parts List (CSP-900IPL-4) and Manufacturers Installation and Rigging Instructions (included with modification kit).

SERVICE LETTER

DATE: 05 APRIL 1996

PAGE 2 OF 5

L. Material/Part Availability: Replacement parts will be made available to owners/operators at no cost until 31 December, 1996.

NOTE

- Quantities reflect both LH and RH door latch modifications.
- Items agree with accomplishment task items.

Cockpit Door Latching Mechanism Modification Kit P/N 900F3305187-101/-102

REPLACEMENT PARTS/SUPPLIES				
Items	Nomenclature	Part No.	Qty.	Source
17	Clevis, LH	(70180-1)	1	MDHS
16	Tube, Connecting	(66110-41)	2	MDHS
2	Clevis, RH	(70180-2)	1	MDHS
15	Clevis	(70181)	2	MDHS
21	Spring, Extension	(70136)	2	MDHS
7	Spring, Compression	(32142)	2	MDHS
25	Spacer	(70185)	2	MDHS
24	Screw, Pan Head (20021-414)	MS51957-48	2	MDHS
22	Clevis Pin (20063-213)	MS9463-07	2	MDHS
19	Clevis Pin	(70184)	2	MDHS
18	Washer, Flat	(31560)	4	MDHS
23	Washer, Flat (20027-206)	AN960-C10L	2	MDHS
4	Washer, Flat (20027-205)	AN960-C8	2	MDHS
20	Cotter Pin (20001-208)	MS24665-86	4	MDHS
8	Cotter Pin (20001-105)	MS24665-1001	2	MDHS

Part numbers in parenthesis () are vendor numbers.

2. ACCOMPLISHMENT INSTRUCTIONS:

Door Latch Modification Procedure (Ref. Figure 1)

NOTE

Before removal, mark latch block assembly locations to allow latch blocks to be refitted in the original location after rework. The entire latching mechanism should be removed and laid on a suitable work bench.

SERVICE LETTER

DATE: 05 APRIL 1996

PAGE 3 OF 5

- A.** Remove screws that attach entire latching mechanism (1) to door structure (including screws from outside door handle assembly (3)).

NOTE

Ensure spacers from door handle assembly stay in place by replacing screws loosely in holes.

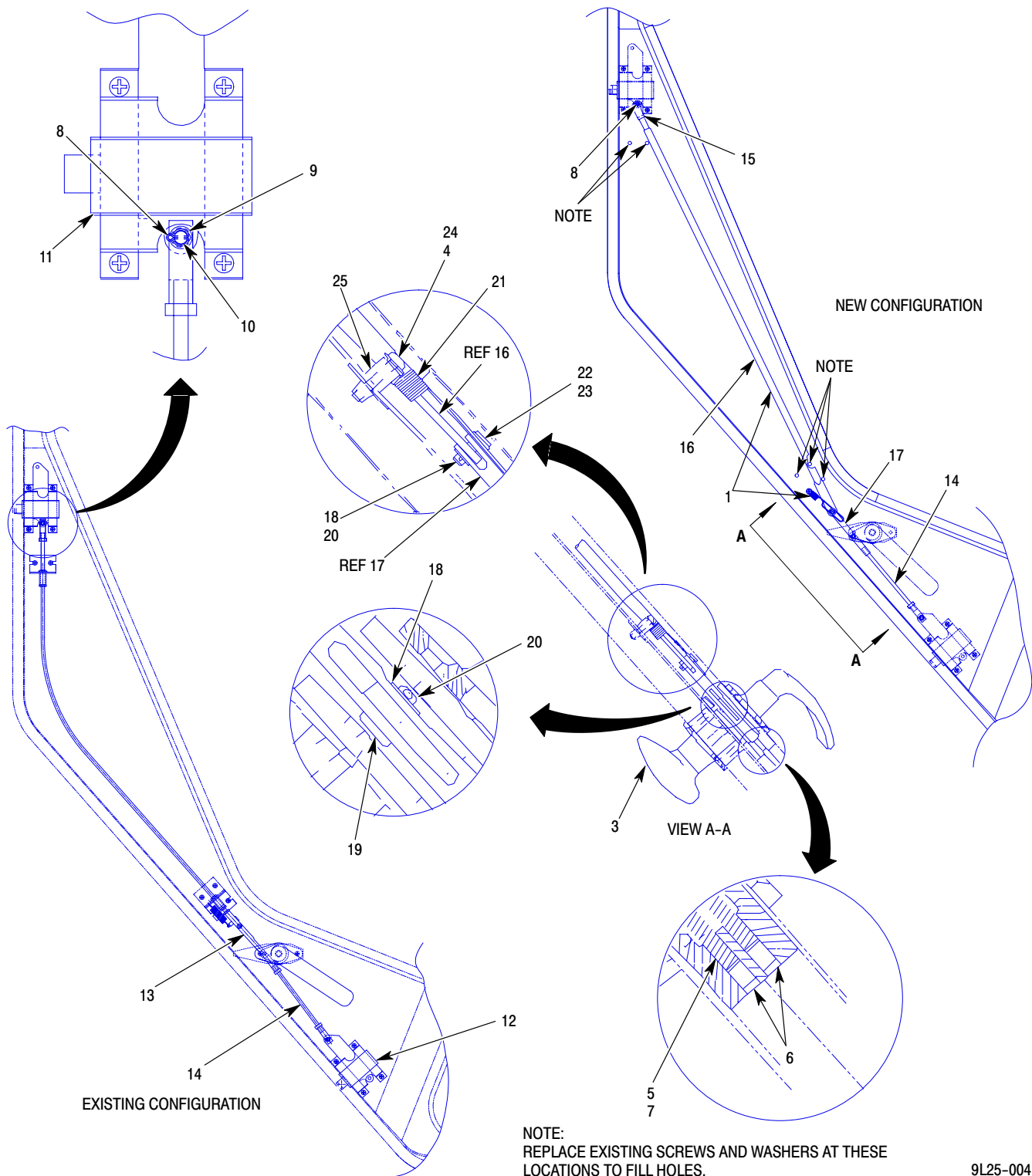
- B.** Remove compression springs (5) from door handle (3) by releasing screws (6).
- C.** Replace springs (5) with replacement compression springs (7) and secure with existing screws (6).
- D.** From upper latch block assembly (11), remove and discard cotter pin (8). Remove and retain washer (9) and clevis pin (10).
- E.** Except for that of the lower latch block assembly (12), remove and discard remainder of cotter pins (8).
- F.** Remove and retain remainder of washers (9) and clevis pins (10).
- G.** Remove link (13) from upper end of lower push/pull rod (14).
- H.** Install clevis (15) onto connecting tube (16).
- I.** Attach to upper latch block (11) using washer (9) and clevis pin (10). Install new cotter pin (8).
- J.** Install LH clevis (17) onto upper end of lower push/pull rod (14).

NOTE

For right hand cockpit door latch modification use RH clevis (2).

- K.** Attach to door handle assembly (3) using washer (18) and clevis pin (19). Install new cotter pin (20).
- L.** Attach clevis (17) to connecting tube (16) and extension spring (21) using clevis pin (22) and washers (18 and 23). Install new cotter pin (20).
- M.** Re-install modified latching mechanism (1) to door structure using original screws.
- N.** Secure extension spring (21) to door structure in remaining unused hole using screw (24), spacer (25) and washer (4).
- O.** Verify door latching mechanism operation per revised rigging instructions document provided with door modification kit.

SERVICE LETTER



9L25-004

Figure 1. Door Latching Mechanism Removal



SERVICE LETTER

DATE: 05 APRIL 1996

PAGE 5 OF 5

Legend (Ref. Figure 1)

1. LATCHING MECHANISM
2. CLEVIS, RH * (NOT SHOWN; ILLUSTRATION SHOWS LEFT HAND CONFIGURATION ONLY)
3. HANDLE ASSEMBLY
4. WASHER *
5. COMPRESSION SPRING
6. SCREW
7. COMPRESSION SPRING *
8. COTTER PIN *
9. WASHER
10. CLEVIS PIN
11. UPPER LATCH BLOCK ASSEMBLY
12. LOWER LATCH BLOCK ASSEMBLY
13. LINK
14. PUSH/PULL ROD
15. CLEVIS *
16. CONNECTING TUBE *
17. CLEVIS, LH *
18. WASHER *
19. CLEVIS PIN *
20. COTTER PIN *
21. EXTENSION SPRING *
22. CLEVIS PIN *
23. WASHER *
24. SCREW *
25. SPACER *

NOTE

* Replacement/New Parts

3. DISPOSITION OF PARTS REMOVED:

All removed parts shall be scrapped.

4. COMPLIANCE RECORD:

Record compliance to this Service Letter in the Compliance Record section of the helicopter Log Book.

POINTS OF CONTACT: For further assistance, contact your local MDHS Field Service Representative (refer to the latest revision of the Business Development and Customer Support handbook for address and telephone numbers) or contact the Field Service Department at MDHS Mesa, Arizona. Telephone: 1-800-388-3378 or (602) 891-6342. DATAFAX: (602) 891-6782.