



SERVICE LETTER

DATE: 11 NOVEMBER 1995

PAGE 1 OF 2

SUBJECT: IMPROVED RIG PIN ACCESS FOD COVERS

MODELS AFFECTED: All McDonnell Douglas Helicopter Systems (MDHS) MD900 series helicopters.

The purpose of this letter is to inform all MD900 helicopter owners and operators of the optional modifications to two of the upper deck FOD covers, which can be accomplished by field maintenance.

Holes can be installed in specific positions on the collective/longitudinal and lateral FOD covers to eliminate the need to remove the covers for flight controls rigging and rigging verification. Rig pin insertion can be done through the respective access holes.

Hole plugs are to be installed when the aircraft is not being serviced and during normal flight operations to prevent foreign objects or debris from entering the rig pin access holes. Plugs can be procured by contacting MDHS Parts Sales.

The part number for the hole plug is: 11394M (5 required).

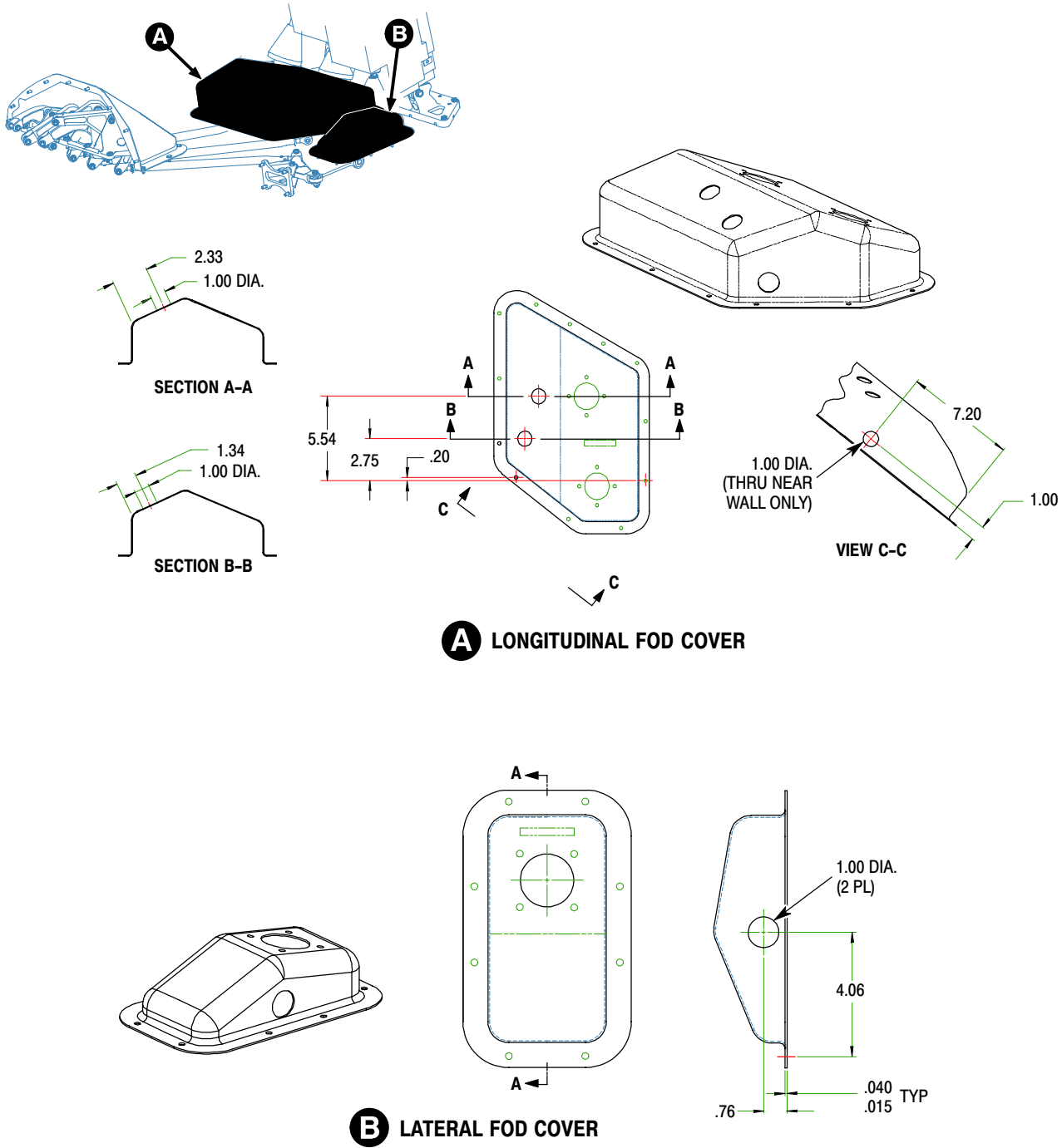
A handwritten signature in black ink, appearing to read 'John Reagan'.

John Reagan, Dept. Manager,
Commercial Customer Support
McDonnell Douglas
Helicopter Systems

POINTS OF CONTACT: For further assistance, contact the Field Service Department at MDHS, Mesa Arizona. Telephone: 1-800-388-3378 or (602) 891-6342.
DATAFAX: (602) 891-6782.

DATE: 11 NOVEMBER 1995
PAGE 2 OF 2

SERVICE LETTER



9L67-002

Figure 1. Improved Rig Pin Access FOD Covers