



DN-40

TECHNICAL BULLETIN

DATE: 15 DECEMBER 1978
PAGE 1 OF 3

SUBJECT: EXTENSION OF PN 369A8010-615 OVERBOARD VENT TUBE ENGINE ACCESSORY DRIVE

MODELS AFFECTED: 500D Model 369D Helicopter Serial No. 0004D through 0519D

TIME OF COMPLIANCE: At owners and operators discretion

PREFACE: The information given in this Service Information Notice lists a procedure for adding an extension tube to the existing engine accessory drive overboard vent tube. The rework extends the vent tube four inches below the skin of the helicopter, to reduce oil spattering onto the lower fuselage.

REFERENCE PUBLICATIONS: 500D Basic HMI – Volume 1, Issued 15 September 1976; Revision No. 2, 27 November 1978

DATE: 15 DECEMBER 1978

PAGE 2 OF 3

TECHNICAL BULLETIN

PARTS LIST			
Nomenclature	Part No.	Qty.	Source
Rivet	NAS1738B4-2	2	Commercial
Grommet	MS35489-22	1	Commercial

MATERIALS

Tubing - 4.85 in. long X 0.875 in. OD x 0.058 in wall (5052-0 Al Aly, WW-T-700/4, Type I, Temp 0)		Commercial
Sealant	PR1221	Product Research
	or	
	Pro-Seal 247 or 890	Coast Pro-Seal

TOOLS AND EQUIPMENT

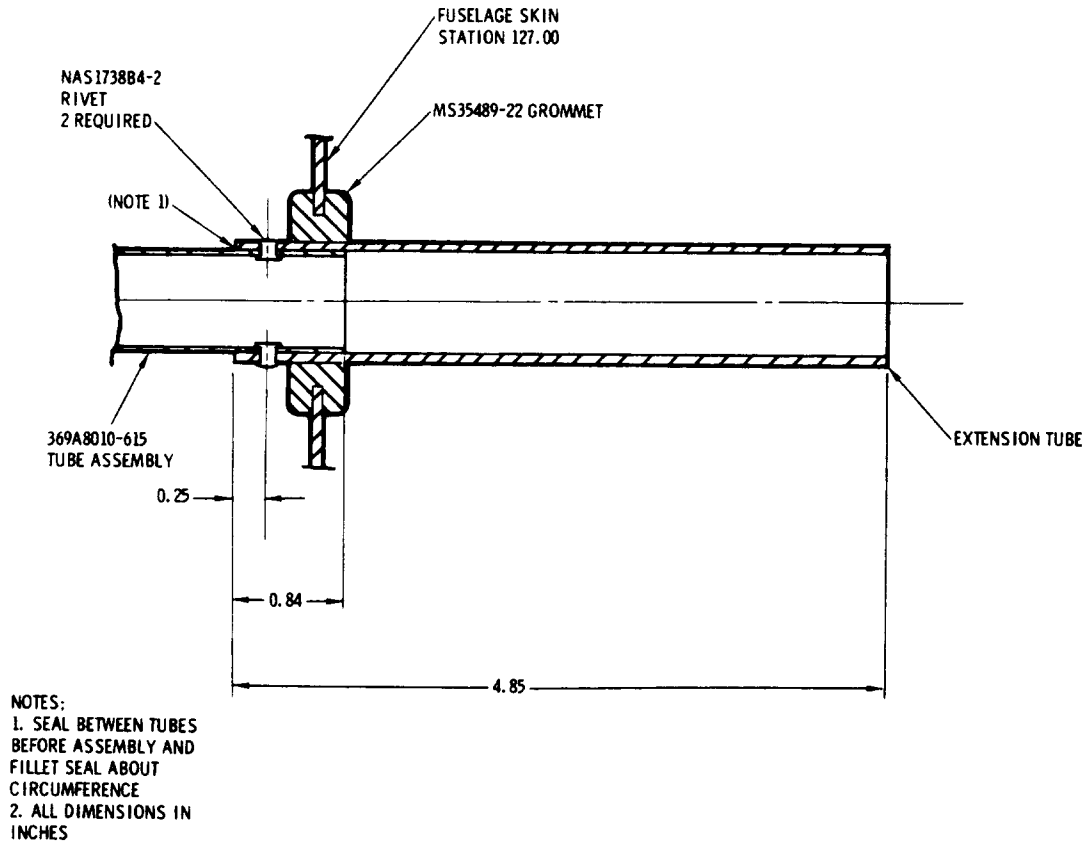
Gun, rivet
 Drill motor, portable
 Drill bit - 0.1285 in. (No. 30)

PROCEDURE

- a. Open engine access doors.
- b. Disconnect accessory drive overboard vent tube from elbow on engine accessory case; remove vent tube from helicopter.
- c. Install extension tube to existing vent tube as follows:
 - 1). Position extension tube over vent tube as shown in Figure 1; drill rivet holes in line thru tubing; install two NAS1738B4-2 rivets.
 - 2). Apply sealant between tubes as shown; fillet seal about circumference of tubes.

TECHNICAL BULLETIN

DATE: 15 DECEMBER 1978
PAGE 3 OF 3



88-295

Figure 1. Extension of Overboard Vent Tube, Engine Accessory Drive

- d. Remove existing grommet at lower fuselage Station 127.0 and install new MS35489-22 grommet.
- e. Insert extension tube through grommet and connect vent tube to elbow on engine accessory case. Torque line nut to 120 to 140 inch-pounds.
- f. Check installation of vent tube and extension for discrepancies.
- g. Close engine access doors.

WEIGHT AND BALANCE:

Weight and balance not affected.