



SERVICE BULLETIN

DATE: 23 OCTOBER 2001

PAGE 1 OF 5

/// MANDATORY ////////////////////////////////////// MANDATORY ////////////////////////////////////// MANDATORY ///

FAN PITCH CONTROL AFT TUBE ASSEMBLY ONE TIME INSPECTION

1. PLANNING INFORMATION

A. Aircraft Affected:

Model 500N Helicopters, serial number LN001 thru LN094.
(Serial numbers LN092 thru LN094 were checked prior to delivery and are affected only if the aft tube assembly (P/N 500N7113-11) has been replaced.)

Model 600N Helicopters, serial number RN003 thru RN061.
(Serial numbers RN053, RN056 thru RN057 and RN060 thru RN061 were checked prior to delivery and are affected only if the aft tube assembly (P/N 500N7113-11) has been replaced.)

All Aft Tube Assemblies (P/N 500N7113-11) in spares inventory.

B. Assembly/Components Affected By This Bulletin:

Aft Tube Assembly (P/N 500N7113-11).

C. Reason:

Some fan pitch control aft tube assemblies were manufactured with the locking slot at an incorrect angle, which may cause misalignment of the fan pitch control linkage.

Failure to comply with this Bulletin may cause excessive wear on the associated clevis assembly and bellcrank.

D. Description:

Procedures in this Bulletin provide owners and operators with information pertaining to inspecting the fan pitch control linkage to determine if a discrepant aft tube assembly is installed and if any damage has occurred. Instructions for identifying discrepant aft tube assemblies in spares inventory are also included.

E. FAA Approval:

The technical design aspects of this Bulletin are FAA Approved.

F. Manpower:

0.75 man-hour for inspection (helicopters without a particle separator).
1.5 man-hours for inspection (helicopters with a particle separator).
8.0 man-hours for replacement.

G. Time of Compliance

The requirements of this Bulletin shall be accomplished within the next 100 hours of helicopter operation after receipt of this Bulletin, but no later than 30 June 2002.

H. Interchangeability:

None

/// MANDATORY ////////////////////////////////////// MANDATORY ////////////////////////////////////// MANDATORY ///



DATE: 23 OCTOBER 2001

PAGE 2 OF 5

SERVICE BULLETIN

/// MANDATORY ////////////////////////////////////// MANDATORY ////////////////////////////////////// MANDATORY ///

I. Material/Part Availability:

Contact MDHI Warranty and Repair Dept.

REPLACEMENT PARTS/SUPPLIES			
Nomenclature	Part No.	Qty.	Source
Tube Assembly, Aft	500N7113-11	1	MDHI
Clevis Assembly	500N7114-3	1	MDHI
Bellcrank	500N7110-3	1	MDHI

J. Warranty Policy:

MDHI will replace discrepant parts at no cost to the operator. MDHI will also credit operators that are required to replace the aft tube assembly with 8 hours of labor warranty (spares credit).

K. Tooling:

N/A

L. Weight and Balance:

N/A

M. Electrical Load Data:

N/A

N. Other Publications Affected:

N/A

O. Points of Contact

For further assistance, contact your local MDHI Field Service Representative (refer to the latest revision of the "At Your Service" handbook for address and telephone numbers) or contact the Field Service Department at MDHI, Mesa, Arizona. Telephone 1-800-388-3378 or (480) 346-6387. DATAFAX: (480) 346-6813.

2. ACCOMPLISHMENT INSTRUCTIONS

A. Fan Pitch Control Linkage Inspection

- (1). Remove engine inlet screen (Ref. CSP-HMI-2, Section 71-10-00, Engine Air Inlet Screen Removal (600N) or remove particle separator Ref. CSP-HMI-2, Section 71-10-60, Particle Separator Removal).

(Ref. Figure 1)

- (2). Inspect link assembly for contact with clevis assembly and bellcrank.
- (3). Inspect inside of clevis assembly and bellcrank for wear, indicated by shiny crescent shaped area near link assembly.

/// MANDATORY ////////////////////////////////////// MANDATORY ////////////////////////////////////// MANDATORY ///



SERVICE BULLETIN

DATE: 23 OCTOBER 2001

PAGE 3 OF 5

/// MANDATORY ////////////////////////////////////// MANDATORY ////////////////////////////////////// MANDATORY ///

- (4). If link assembly is contacting either clevis assembly or bellcrank, replace aft tube assembly (Ref. CSP-HMI-2, Section 67-20-30, Fan Pitch Control Tube Replacement). Return removed aft tube assembly to MDHI.
- (5). If wear is observed on clevis assembly or bellcrank, replace aft tube assembly, clevis assembly and bellcrank (Ref. CSP-HMI-2, Section 67-20-30, Fan Pitch Control Tube Replacement and Station 135.50 Support Bracket and Bellcrank Replacement). Return removed aft tube assembly, clevis assembly and bellcrank to MDHI.
- (6). Install engine inlet screen (Ref. CSP-HMI-2, Section 71-10-00, Engine Air Inlet Screen Installation (600N) or install particle separator Ref. CSP-HMI-2, Section 71-10-60, Particle Separator Installation).

B. Inspection Aft Tube Assembly In Spares Inventory

- (1). Inspect splined end of all aft tube assemblies in spares inventory that are marked "Jaco, 1/99".
 - (Ref. Figure 2)
 - (a). An unserviceable part is identified by the locating slot cut between the splines, as shown.
 - (b). A serviceable part is identified by the locating slot cut into part of the spline, as shown.
 - (2). Return unserviceable parts to MDHI.

3. IDENTIFICATION

N/A

4. DISPOSITION OF PARTS REMOVED

Return to MDHI Warranty Repair Dept.

5. COMPLIANCE RECORD

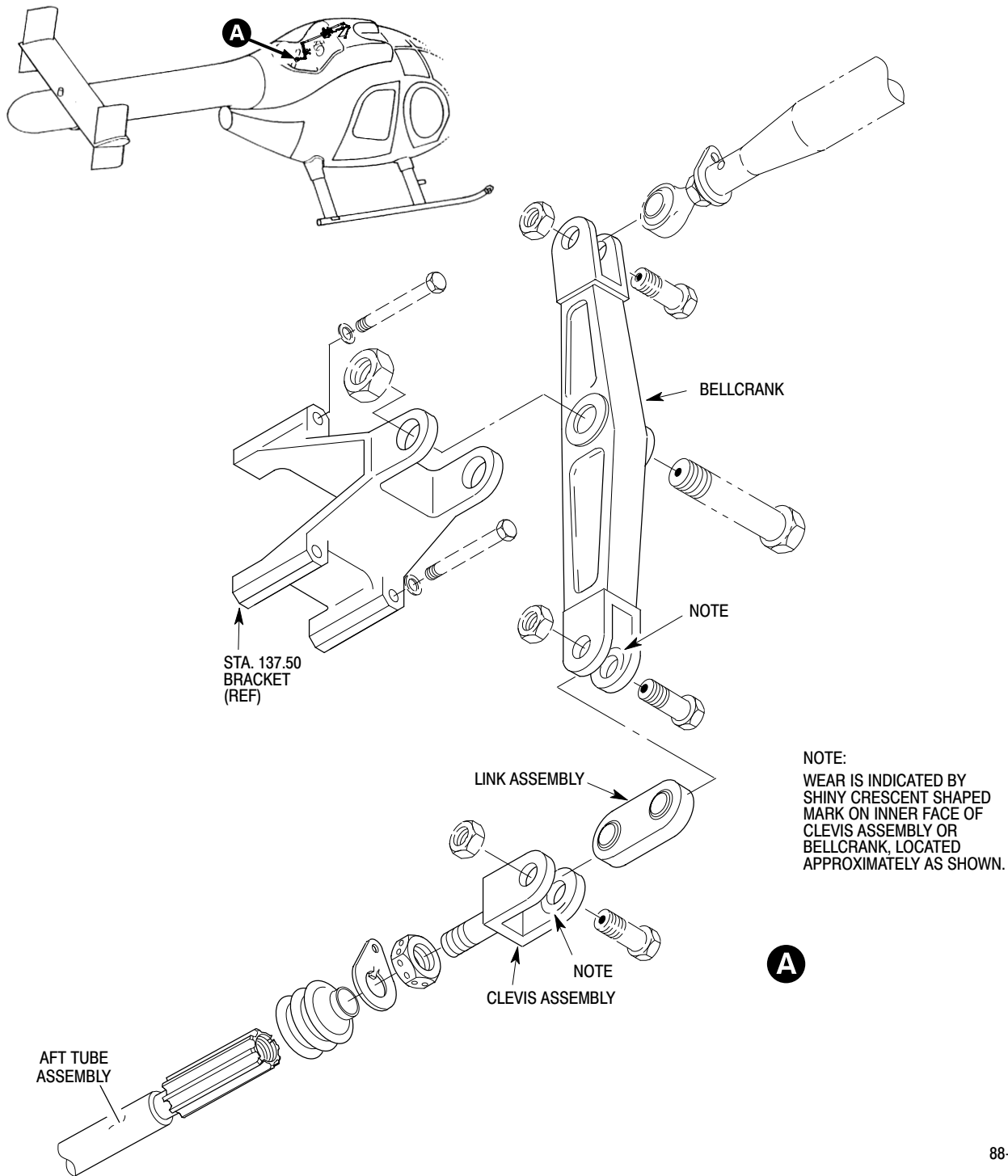
Record Compliance with this Service Bulletin in the Compliance Record section of the helicopter Log Book.

/// MANDATORY ////////////////////////////////////// MANDATORY ////////////////////////////////////// MANDATORY ///

DATE: 23 OCTOBER 2001
PAGE 4 OF 5

SERVICE BULLETIN

MANDATORY MANDATORY MANDATORY



88-796

Figure 1. Fan Pitch Control Linkage

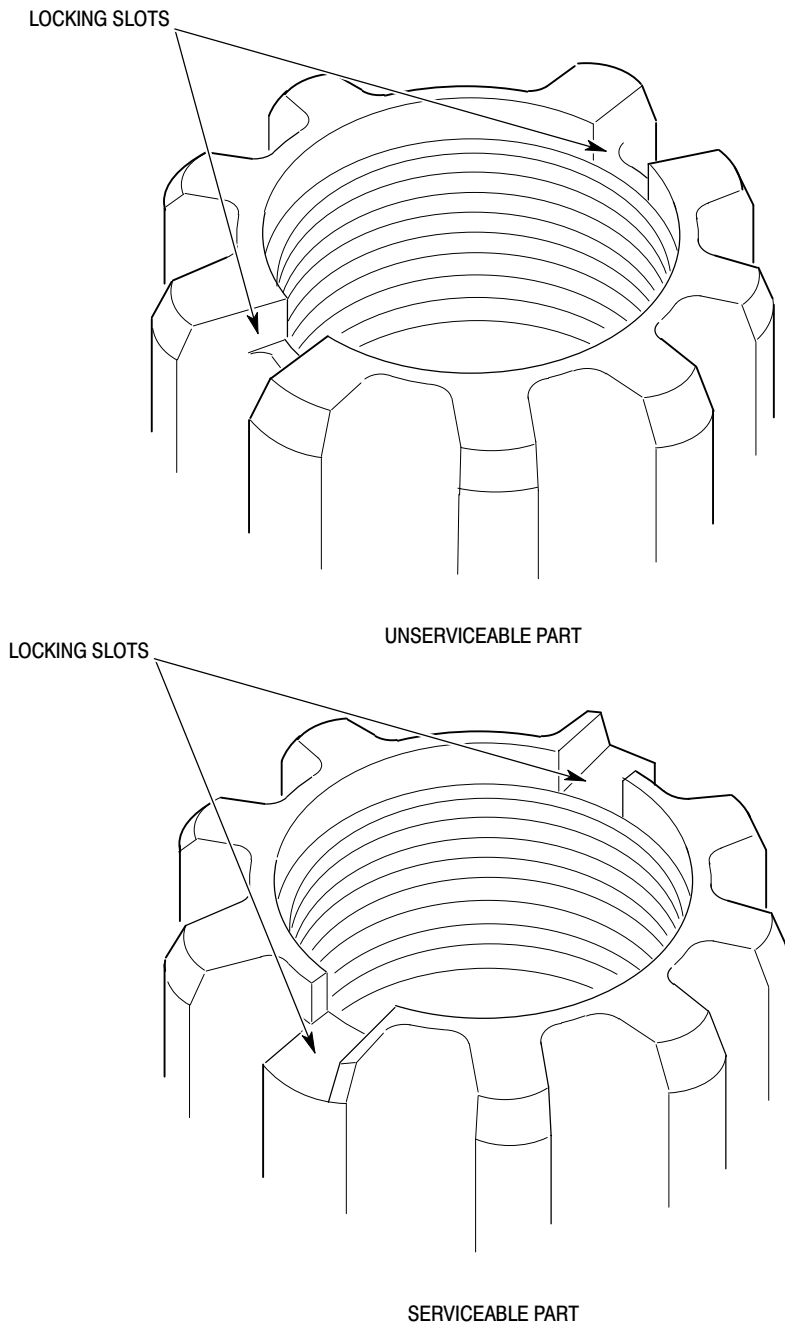
MANDATORY MANDATORY MANDATORY

SERVICE BULLETIN

DATE: 23 OCTOBER 2001

PAGE 5 OF 5

MANDATORY MANDATORY MANDATORY



88-798

Figure 2. Splined End of Aft Tube Assembly

MANDATORY MANDATORY MANDATORY