



SERVICE BULLETIN

DATE: 28 MARCH 2007
PAGE 1 OF 5

/// MANDATORY ////////////////////////////////////// MANDATORY ////////////////////////////////////// MANDATORY ///

ONE TIME INSPECTION OF THE OIL COOLER BLOWER, DRIVE PULLEY INSTALLATION

1. PLANNING INFORMATION

A. Aircraft Affected:

MD Helicopters, Inc. (MDHI) helicopters 369E (S/N 0568 and 0571E), 369FF (S/N 0146FF), 500N (S/N LN102, LN103 and LN104) and 600N (S/N RN060, RN065, RN068, RN069 and RN070) that have 369D25630-101 or 600N5630-501, blower assemblies installed.

B. Assembly/Components Affected By This Bulletin:

Fan Assembly - Transmission & Coupling P/N 369F5610-501 and -503.

C. Reason:

There have been reports from the field that oil cooler driven pulleys have been installed onto the oil cooler blower assembly with missing hardware or with the correct hardware installed incorrectly. This has caused the driven pulley to become loose and cause damage to surrounding components. Failure to comply with this Bulletin can result in damage to the oil cooler blower assembly, the driven pulley and excessive oil temperatures.

D. Description:

Procedures in this Bulletin provide owners and operators with information pertaining to inspection of the oil cooler blower assembly and driven pulley to make sure that the correct hardware is installed in accordance with the Handbook of Maintenance Instruction (CSP-HMI-2).

E. FAA Approval:

The technical design aspects of this Bulletin are FAA Approved.

F. Manpower:

Part 1: 1.5 man-hours.

Part 2: 5.5 man-hours.

G. Time of Compliance

Part 1: Complete the requirements of this Bulletin prior to the next flight.

Part 2: If correct assembly can not be verified in Part 1. A one time ferry flight not to exceed 100KTS to an appropriate maintenance facility to perform the required repairs is authorized

H. Interchangeability:

None

I. Material/Part Availability:

Parts/supplies can be purchased from MDHI and locally from commercial sources.

*Copyright 1999-2006 by MD Helicopters, Inc
This document may be reproduced and distributed provided no fee is charged,
the text is not modified, and this copyright notice is included.*

/// MANDATORY ////////////////////////////////////// MANDATORY ////////////////////////////////////// MANDATORY ///



DATE: 28 MARCH 2007
PAGE 2 OF 5

SERVICE BULLETIN

MANDATORY

REPLACEMENT PARTS/SUPPLIES				
Nomenclature	Part No.	Qty.	Effectivity	Source
Nut, Self Locking, Reduced Hexagon, Ring Base	MS21043-6	1	D/E/FF/500N/600N	MDHI
Washer	369D25633	1	D/E/FF/500N/600N	MDHI
Washer	AN960C916	1	D/E/FF/500N/600N	MDHI
Washer, Interchangeable With AN960C916 Washer	NAS1149C0963R	1	D/E/FF/500N/600N	MDHI
Spacer	369D25631	1	D/E/FF/500N/600N	MDHI
Belt	369D25623	1	D/E/FF/500N	MDHI
Belt	93920219	1	600N	MDHI
Pulley, Driven	369D25624	1	D/E/FF/500N	MDHI
Pulley, Driven	600N5624-1	1	600N	MDHI
Shaft	29223	1	D/E/FF/500N	MDHI
Shaft	600N5617-1	1	600N	MDHI
Seal, Interchangeable With 17X40LSTO Seal	29226	1	D/E/FF/500N/600N	MDHI
Seal	17X40LSTO	1	D/E/FF/500N/600N	MDHI
Bearing	369H5655-5	1	D/E/FF/500N/600N	MDHI
Bearing	369H5655-3	1	D/E/FF/500N/600N	MDHI

J. Warranty Policy:

MDHI will provide, to Authorized Service Centers, up to 1.5 hours to inspect and make sure that the driven pulley is installed correctly and an additional 5.5 hours to replace damaged components, if required.

If there are damaged components, MDHI will also provide replacement parts at no cost to the customer.

K. Tooling:

N/A

*Copyright 1999-2006 by MD Helicopters, Inc
This document may be reproduced and distributed provided no fee is charged,
the text is not modified, and this copyright notice is included.*

MANDATORY

SERVICE BULLETIN

DATE: 28 MARCH 2007
PAGE 3 OF 5**/// MANDATORY ////////////////////////////////////// MANDATORY ////////////////////////////////////// MANDATORY ///****L. Weight and Balance:**

N/A

M. Electrical Load Data:

N/A

N. Other Publications Affected:

N/A

O. Points of Contact

For further assistance, contact your local MDHI Field Service Representative or contact the Field Service Department at MDHI, Mesa, Arizona.
Telephone 1-800-388-3378 or (480) 346-6387.
DATAFAX: (480) 346-6813.

2. ACCOMPLISHMENT INSTRUCTIONS**A. Part 1: Driven Pulley Assembly Installation Inspection**

- (1). Gain access to oil cooler blower assembly (Ref CSP-HMI-2, Sec 25-30-00).

NOTE: If the AN960C916 washer can not be verified as being correctly installed between the driven pulley and the 369D25631 spacer on the oil cooler blower shaft (Ref Figure 1), the oil cooler assembly must be removed from the aircraft and disassembled.

- (2). Using a bright light and a mirror inspect the oil cooler blower assembly to make sure that the driven pulley is installed correctly on the oil cooler shaft (Ref. CSP-HMI-2 and CSP-IPC-4, Section 63-21-00).

B. Part 2: Removal, Repair And Reinstallation Of The Oil Cooler Blower Assembly

- (1). Remove driven pulley and oil cooler blower assembly from aircraft (Ref CSP-HMI-2, Sec 63-21-00).
- (2). Remove driven pulley from oil cooler blower shaft (Ref CSP-HMI-2, Sec 63-21-00).
- (3). Verify that the AN960C916 washer is installed between the driven pulley and the 369D25631 spacer. (See Figure 1)
- (4). Inspect oil cooler blower assembly, driven pulley and belt (Ref CSP-HMI-2, Sec 63-21-00).
- (5). Remove and replace damaged components (Ref CSP-HMI-2, Sec 63-21-00).
- (6). Reinstall driven pulley and oil cooler blower assembly (Ref CSP-HMI-2, Sec 63-21-00).

3. IDENTIFICATION

N/A

4. DISPOSITION OF PARTS REMOVED

Send back to MDHI for evaluation.

Figure 1.

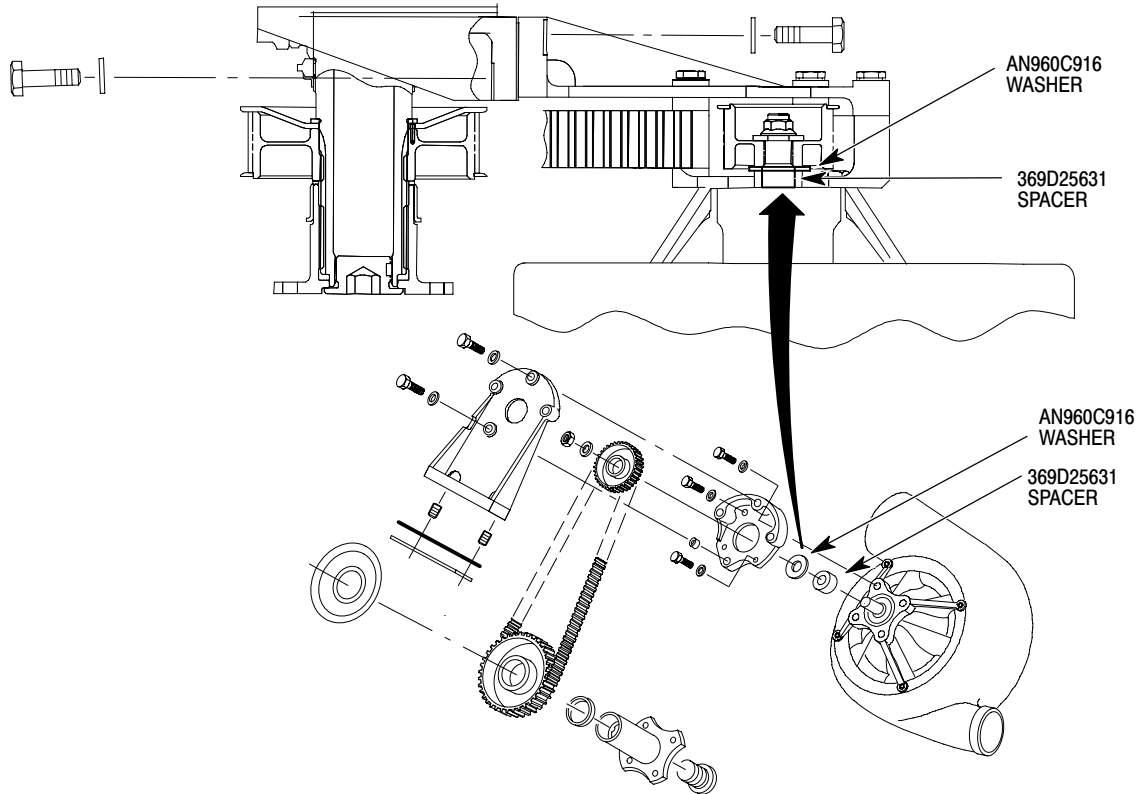
*Copyright 1999-2006 by MD Helicopters, Inc
This document may be reproduced and distributed provided no fee is charged,
the text is not modified, and this copyright notice is included.*

/// MANDATORY ////////////////////////////////////// MANDATORY ////////////////////////////////////// MANDATORY ///

DATE: 28 MARCH 2007
PAGE 4 OF 5

SERVICE BULLETIN

MANDATORY MANDATORY MANDATORY



88-787

5. COMPLIANCE RECORD

Record Compliance with this Service Bulletin in the Compliance Record section of the Rotorcraft Log Book.

MANDATORY MANDATORY MANDATORY

