

SERVICE BULLETIN

DATE: 5 FEBRUARY 2010

PAGE 1 OF 6

/// MANDATORY ////////////////////////////////////// MANDATORY ////////////////////////////////////// MANDATORY ///

INSPECTION OF P/N 369D292028, AFT PASSENGER STEP ASSEMBLIES, ON EXTENDED LANDING GEAR ASSEMBLIES

1. PLANNING INFORMATION

A. Aircraft Affected:

Model 369D Helicopters, all serial numbers
Model 369E Helicopters, serial numbers 0001E thru 0597E, and 0599E
Model 369F/FF Helicopters, serial numbers 0001FF thru 0155FF, 0157FF through 0171FF
Model 500N Helicopters, serial numbers LN001 thru LN0108

B. Assembly/Components Affected By This Bulletin:

PN 369D292028-BSC and 369D292028-5 aft passenger step assemblies used on helicopters with extended landing gear assemblies and all spares inventory.

Step assemblies purchased for MD Helicopters, Inc. after 12 December 2009 do not require this inspection.

NOTE: All step assemblies that have been modified per Part III of DN-110.1, EN-56, or FN-42 do not require this inspection.

C. Reason:

Examine aft passenger step assemblies for possible cracked welds.

D. Description:

This bulletin gives instructions for a three part inspection. An initial visual inspection with 10X magnification, a proof load test with visual inspection and a dye penetrant inspection of the aft passenger step assembly welds.

E. FAA Approval:

The technical design aspects of this bulletin are FAA Approved.

F. Time of Compliance:

This Service Bulletin must be completed within 25 flight hours of receipt.

G. Manpower:

1 man-hour for inspection
0.5 man-hours for step replacement

H. Interchangeability:

None

I. Points of Contact:

For further assistance, contact the Field Service Department at MDHI, Mesa, Arizona. Telephone 1-800-388-3378 or (480) 346-6387. DATAFAX: (480) 346-6813.

*Copyright 1999-2010 by MD Helicopters Inc.
This document may be reproduced and distributed provided no fee is charged,
the text is not modified, and this copyright notice is included.*

/// MANDATORY ////////////////////////////////////// MANDATORY ////////////////////////////////////// MANDATORY ///

SERVICE BULLETIN

/// MANDATORY ////////////////////////////////////// MANDATORY ////////////////////////////////////// MANDATORY ///

J. Material/Part Availability:

Speak to the MDHI Warranty Repair Department to order the aft step assembly.

| REPLACEMENT PARTS/SUPPLIES | | | |
|----------------------------|--------------|------|--------|
| Nomenclature | Part No. | Qty. | Source |
| Step Assembly, AFT | 369D292028-5 | AR | MDHS |
| Primer | MIL-P-85582 | AR | MDHS |

K. Warranty Policy:

The MDHI Warranty and repair Department will supply aft step assemblies at no cost to the operator for rotorcraft still under MDHI warranty. MDHI will also give up to 1 hour of labor warranty (spares credit) for the inspections and 0.5 hour of labor warranty (spares credit) for the step removal and replacement for rotorcraft still under MDHI warranty.

L. Disposition of Parts Removed:

Scrap removed aft step assemblies.

M. Tooling:

Magnifying Glass, 10X minimum - commercial
Dye Penetrant Inspection Kit - commercial

N. Weight and Balance:

N/A

O. Electrical Load Data:

N/A

P. Other Publications Affected:

CSP-HMI-2, Handbook of Maintenance Instructions

2. ACCOMPLISHMENT INSTRUCTIONS

(Ref. Figure 1)

A. Preparation

- (1). Remove cover and fairing on aft extended landing gear assemblies (Ref. CSP-HMI-2, Section 32-10-00).

B. Initial Visual Inspection

- (1). Clean weld area with solvent.
- (2). Using 10X magnifying glass, examine weld where step is attached to mounting plate for possible cracking or damage (View A-A).
- (3). If any cracks are visible, replace step assembly (Ref. CSP-HMI-2, Section 32-10-00).
- (4). If no cracks are visible, do Part C.
- (5). If the step assembly is replaced, do Part E.

*Copyright 1999-2010 by MD Helicopters Inc.
This document may be reproduced and distributed provided no fee is charged,
the text is not modified, and this copyright notice is included.*

/// MANDATORY ////////////////////////////////////// MANDATORY ////////////////////////////////////// MANDATORY ///

SERVICE BULLETIN

DATE: 5 FEBRUARY 2010

PAGE 3 OF 6

MANDATORY  **MANDATORY**  **MANDATORY** 

C. Proof Load Test with Visual Inspection

WARNING

Extreme care shall be taken when applying proof load weight to the subject step assembly.

- (1). Apply a 400 pound (181.4 kg) proof load approximately 1.0 inch (25.4 mm) from forward end of step assembly.
- (2). Remove 400 pound (181.4 kg) proof load.
- (3). Using 10X magnifying glass, examine weld where step is attached to mounting plate for possible cracking or damage (View A-A).
- (4). If any cracks are visible, replace step assembly (Ref. CSP-HMI-2, Section 32-10-00).
- (5). If the step assembly is replaced, do Part E.
- (6). If no cracks are visible, do Part D.

D. Dye Penetrant Inspection

CAUTION

Do not allow paint remover to contact other than the inspection area.

- (1). Remove paint from weld area per instructions contained in Standard Practices Manual (CSP-HMI-2, Section 20-30-00, Paint Removal Chemical).
 - (a). Do dye penetrant inspection in accordance with manufacturers instructions. Examine weld where step is attached to mounting plate for possible cracking or damage (View A-A)..
- (2). If any cracks are visible, replace step assembly (Ref. CSP-HMI-2, Section 32-10-00).
 - (a). If no evidence of cracking is found, touch up weld area as follows:
 - 1). Apply chemical coating per instructions contained in Standard Practices Manual (CSP-HMI-2, Section 20-40-00, Aluminum Alloy, Surface Touch-up Treatment).
 - 2). Apply primer and topcoat to match original, as required (CSP-HMI-2, Section 20-30-00, Paint Touchup).
- (3). Do Part E.

E. Marking, Fairing/Cover installation and Compliance Confirmation

- (1). Permanent ink stamp or mark the bottom of step assembly with Service Bulletin number to indicate compliance with this bulletin.
- (2). Install fairing and cover on aft extended landing gear assemblies (Ref. CSP-HMI-2, Section 32-10-00).
- (3). Make a record in the Compliance Record section of the Rotorcraft Log Book that this bulletin is completed.
- (4). Complete the Bulletin Completed Record form. Fax to MDHI Field Service department.

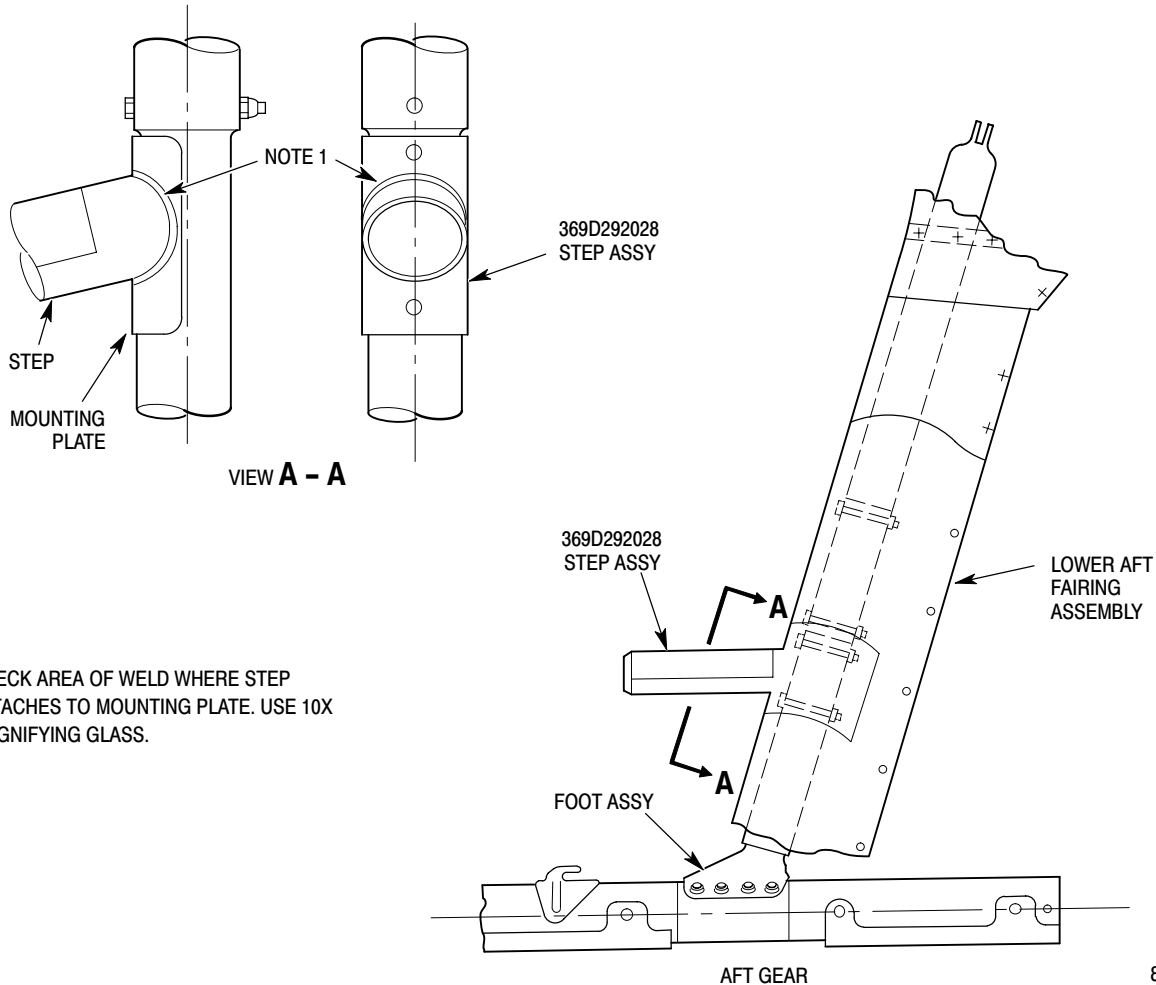
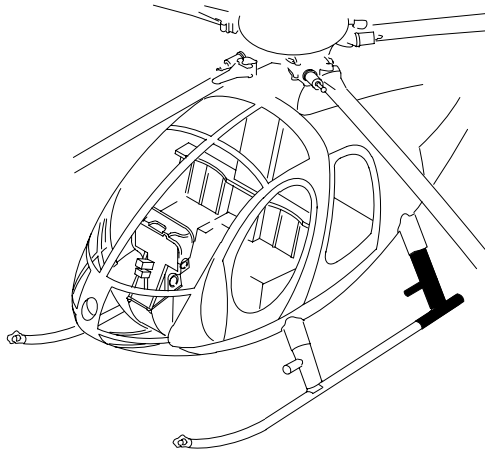
*Copyright 1999-2010 by MD Helicopters Inc.
This document may be reproduced and distributed provided no fee is charged,
the text is not modified, and this copyright notice is included.*

MANDATORY  **MANDATORY**  **MANDATORY** 

DATE: 5 FEBRUARY 2010
PAGE 4 OF 6

SERVICE BULLETIN

MANDATORY MANDATORY MANDATORY



NOTES:

1. CHECK AREA OF WELD WHERE STEP ATTACHES TO MOUNTING PLATE. USE 10X MAGNIFYING GLASS.

88-569C

Figure 1. Inspection of Aft Extended Landing Gear Step Assembly

Copyright 1999-2010 by MD Helicopters Inc.

This document may be reproduced and distributed provided no fee is charged, the text is not modified, and this copyright notice is included.

MANDATORY MANDATORY MANDATORY



SERVICE BULLETIN

DATE: 5 FEBRUARY 2010
PAGE 5 OF 6

/// MANDATORY ////////////////////////////////////// MANDATORY ////////////////////////////////////// MANDATORY ///

Bulletin Completed Record

**Service Bulletin SB369D-206, SB369E-101, SB369F-086, SB500N-043,
Inspection of PN 369D292028, Aft Passenger Step Assemblies, on
Extended Landing Gear Assemblies.**

FAX this form to MDHI (480) 346-6813 or
E-mail to ServiceEngineering@mdhelicopters.com

MD Helicopters, Inc.
Field Service Department
4555 E. McDowell Road
Mesa, AZ 85215-9734

800-388-3378 phone (U.S. and Canada)
480-346-6387 phone (International)
480-346-6813 Fax

Dear Sir:

This is to tell you that this service bulletin has been completed as shown below:

Owner/Operator: _____

Aircraft Serial No: _____

Address: _____

Phone: _____

E-mail address: _____

Helicopter Total Time: _____

Date: _____

Location: _____

This bulletin is complete: _____

(Signature)

(Print Name)

(Title)

/// MANDATORY ////////////////////////////////////// MANDATORY ////////////////////////////////////// MANDATORY ///

SB369D-206
SB369F-086

SB369E-101
SB500N-043



DATE: 5 FEBRUARY 2010
PAGE 6 OF 6

SERVICE BULLETIN

/// MANDATORY ////////////////////////////////////// MANDATORY ////////////////////////////////////// MANDATORY ///

This Page Intentionally Left Blank

*Copyright 1999-2010 by MD Helicopters Inc.
This document may be reproduced and distributed provided no fee is charged,
the text is not modified, and this copyright notice is included.*

/// MANDATORY ////////////////////////////////////// MANDATORY ////////////////////////////////////// MANDATORY ///