



# SERVICE BULLETIN

DATE: 8 DECEMBER 1980

PAGE 1 OF 4

**/// MANDATORY ////////////////////////////////////// MANDATORY ////////////////////////////////////// MANDATORY ///**

\* Supersedes Service Information Notice No. DN-68, Dated 30 June 1980

## RELOCATION OF TAIL ROTOR BUNGEE SPRING FORWARD ATTACHMENT; TAIL ROTOR FORCE ADJUSTMENT

### 1. PLANNING INFORMATION

#### A. MODELS AFFECTED:

500D Model 369D Helicopter Serial No. 003D through 0467D

#### B. PREFACE:

The information given in this Service Information Notice lists a procedure to relocate the tail rotor bungee spring forward attachment to allow installation of washers for bungee adjustment, to adjust for minimum pedal loads in cruise. This revision corrects existing dimensions for the new bungee spring attachment hole location shown in Figure 1.

#### C. TIME OF COMPLIANCE:

Shall be accomplished within next-100 hours of helicopter operation.

#### D. FAA APPROVAL:

FAA/DER APPROVED: 2 December 1980

#### E. WEIGHT AND BALANCE:

Weight and balance not affected

#### F. REFERENCE:

500D Model 369D Basic HMI-Volume I, Issued 15 September 1976;  
Revision No. 3, 15 March 1979.

**/// MANDATORY ////////////////////////////////////// MANDATORY ////////////////////////////////////// MANDATORY ///**





# SERVICE BULLETIN

DATE: 8 DECEMBER 1980

PAGE 3 OF 4

**/// MANDATORY ////////////////////////////////////// MANDATORY ////////////////////////////////////// MANDATORY ///**

## 2. REWORK PROCEDURE

### REWORK PROCEDURE

- a. Remove access cover between pilot's seats and/or passenger's footwell on aft side of canted bulkhead. (Refer to Section 2 of Basic HMI-Vol I. )
- b. Block left tail rotor control pedal at full forward position to relieve tension on bungee spring.
- c. Disconnect bungee spring from eyebolt and remove and retain nut and washer attaching eyebolt to bracket at Station 63. Discard eyebolt.
- d. Locate position and drill new hole using No. 10 drill. Remove any burrs as required. (See Figure 1. )
- e. Seal old eyebolt hole with Scotchweld EC1838 and dry per manufacturer' s instructions.
- f. Treat edge of new hole per exterior touchup treatment- magnesium alloy per Section 2 of Basic HMI-Vol I.
- g. Install eight AN970-3 washers on one AN42B-C10A eyebolt and hook forward end of 369D27521 bungee spring to eyebolt. Insert eyebolt in new hole in 369A2541 bracket and secure with washer and nut retained above. Torque nut to 20- 25 in. lbs.

**NOTE:** If tail rotor pedal forces are not zero during level flight at 130 to 140 knots, tail rotor force adjustment may be accomplished by removing a desired number of AN970-3 washers.

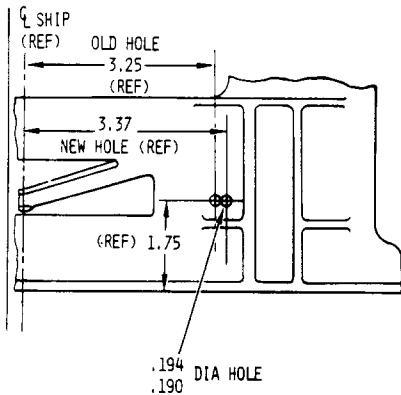
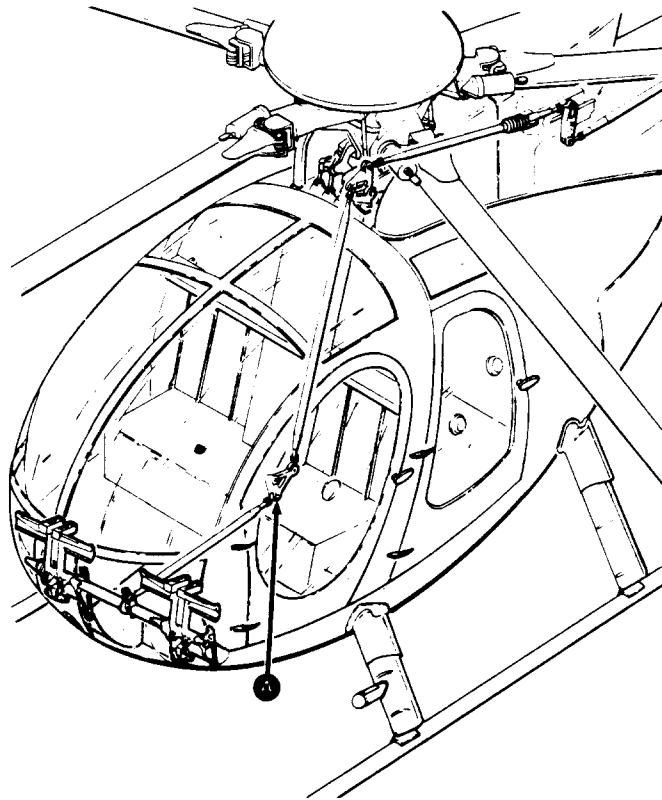
- h. Remove block from left tail rotor control pedal.
- i. Reinstall access cover between pilot' s seats and/or passenger' s footwell. (Refer to Section 2 of Basic HMI-Vol I. )
- j. Record compliance with this Service Information Notice in Compliance Record of helicopter Log Book.

**/// MANDATORY ////////////////////////////////////// MANDATORY ////////////////////////////////////// MANDATORY ///**

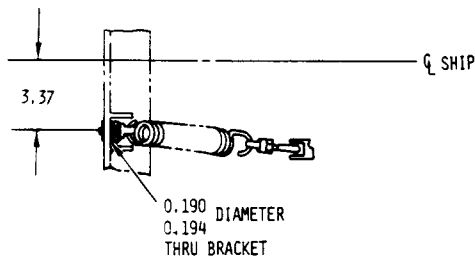
DATE: 8 DECEMBER 1980  
PAGE 4 OF 4

# SERVICE BULLETIN

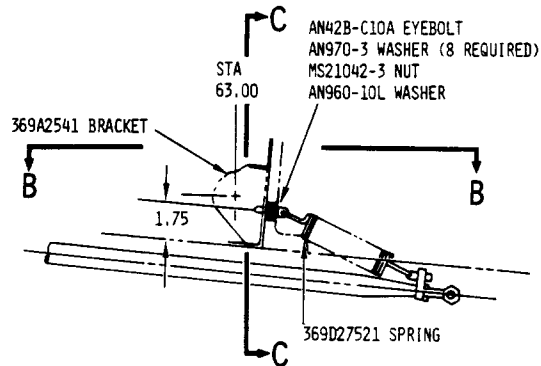
**MANDATORY**



C-C VIEW LOOKING AFT



B-B VIEW LOOKING DOWN



A-A VIEW LOOKING INBOARD LH SIDE

88-386A

### Figure 1. Relocation of Tail Rotor Bungee Spring Forward Attachment

Copyright 1999-2000 by MD Helicopters Inc. This document may be reproduced and distributed provided no fee is charged, the text is not modified, and this copyright notice is included.

**MANDATORY**